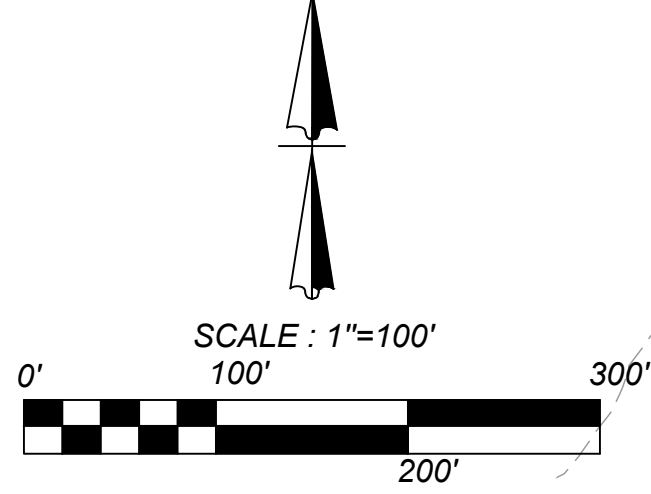


LOCATION MAP  
N.T.S.



UNIT 2

UNIT 3

1.0% EFFECTIVE ZONE  
"AE" FEMA FLOODPLAIN  
FIRM MAP NO.  
48029C0535F  
EFFECTIVE DATE  
SEPTEMBER 29, 2010

1.0% EFFECTIVE ZONE  
"AE" FEMA FLOODPLAIN  
FIRM MAP NO.  
48029C0535F  
EFFECTIVE DATE  
SEPTEMBER 29, 2010

30' RIPARIAN BUFFER

30' RIPARIAN BUFFER

CRESCENT HILLS  
UNIT 1  
(PLAT#20-11800290)

CRESCENT HILLS  
UNIT 1  
(PLAT#20-11800290)

CRESCENT HILLS  
UNIT 1  
(PLAT#20-11800290)

ASTRAL PLACE  
(100' R.O.W.)

ASTRAL PLACE  
(100' R.O.W.)

STELLAR COVE  
(100' R.O.W.)

CELESTIAL COVE  
(100' R.O.W.)

SATELLITE PLACE  
(100' R.O.W.)

SATELLITE PLACE  
(100' R.O.W.)

CRESCENT COVE  
(100' R.O.W.)

SELENE PLACE  
(100' R.O.W.)

FAITHFUL PATH  
(100' R.O.W.)

STREET C  
(100' R.O.W.)

SELENE PLACE  
(100' R.O.W.)

SELENE PLACE  
(100' R.O.W.)

STREET B  
(100' R.O.W.)

STREET A  
(100' R.O.W.)

Date: Jan 19, 2023, 2:19pm User ID: ATirgson  
File: N:\14\26\03\Design\Civil\TREES\TP2314\_603.dwg

THIS DOCUMENT HAS BEEN PRODUCED FROM MATERIAL THAT WAS STORED AND/OR TRANSMITTED ELECTRONICALLY AND MAY HAVE BEEN INADVERTENTLY ALTERED. RELY ONLY ON FINAL HARD COPY MATERIALS BEARING THE CONSULTANT'S ORIGINAL SIGNATURE AND SEAL.



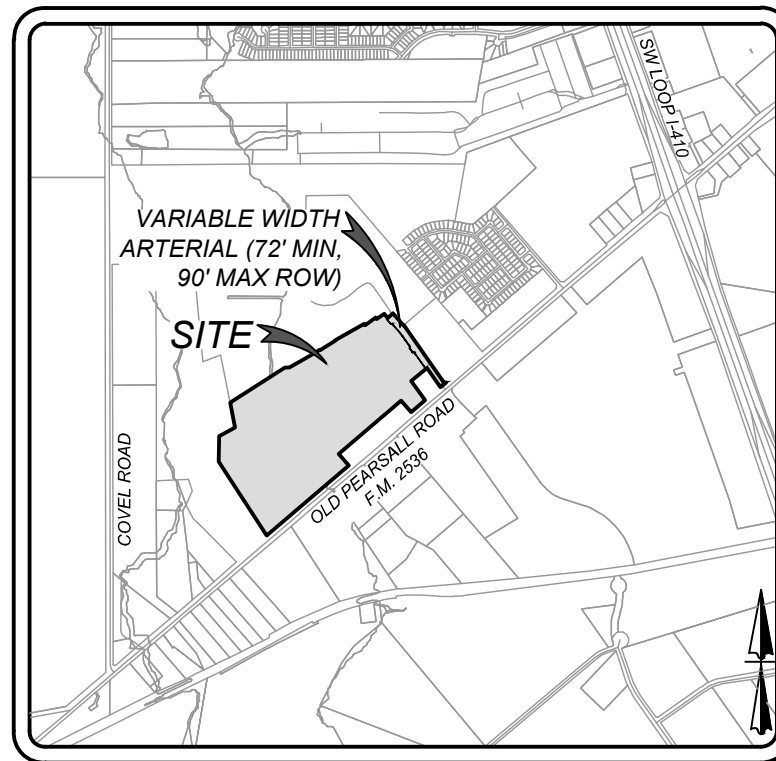
ISSUE DATE  
11/9/2023  
REVISIONS  
CHANGE OF  
PLANNING  
CONSENTS ON  
MOST LOTS TO  
MITIGATE FOR  
ADVERSE  
COMMENTS

CRESCENT HILLS UNITS 2 & 3  
SAN ANTONIO, TEXAS  
OVERALL TREE PRESERVATION PLAN

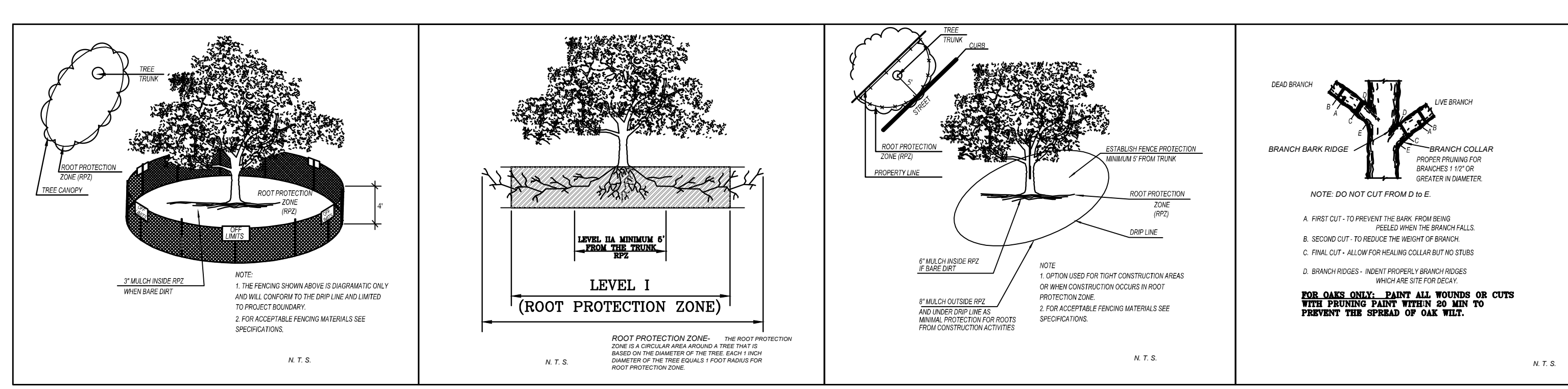
PLAT NO.  
21-11800142  
JOB NO. 314-36-03  
DATE: MAY 2021  
DRAWN: CHECKED: TE

SHEET NUMBER:  
1 OF 8



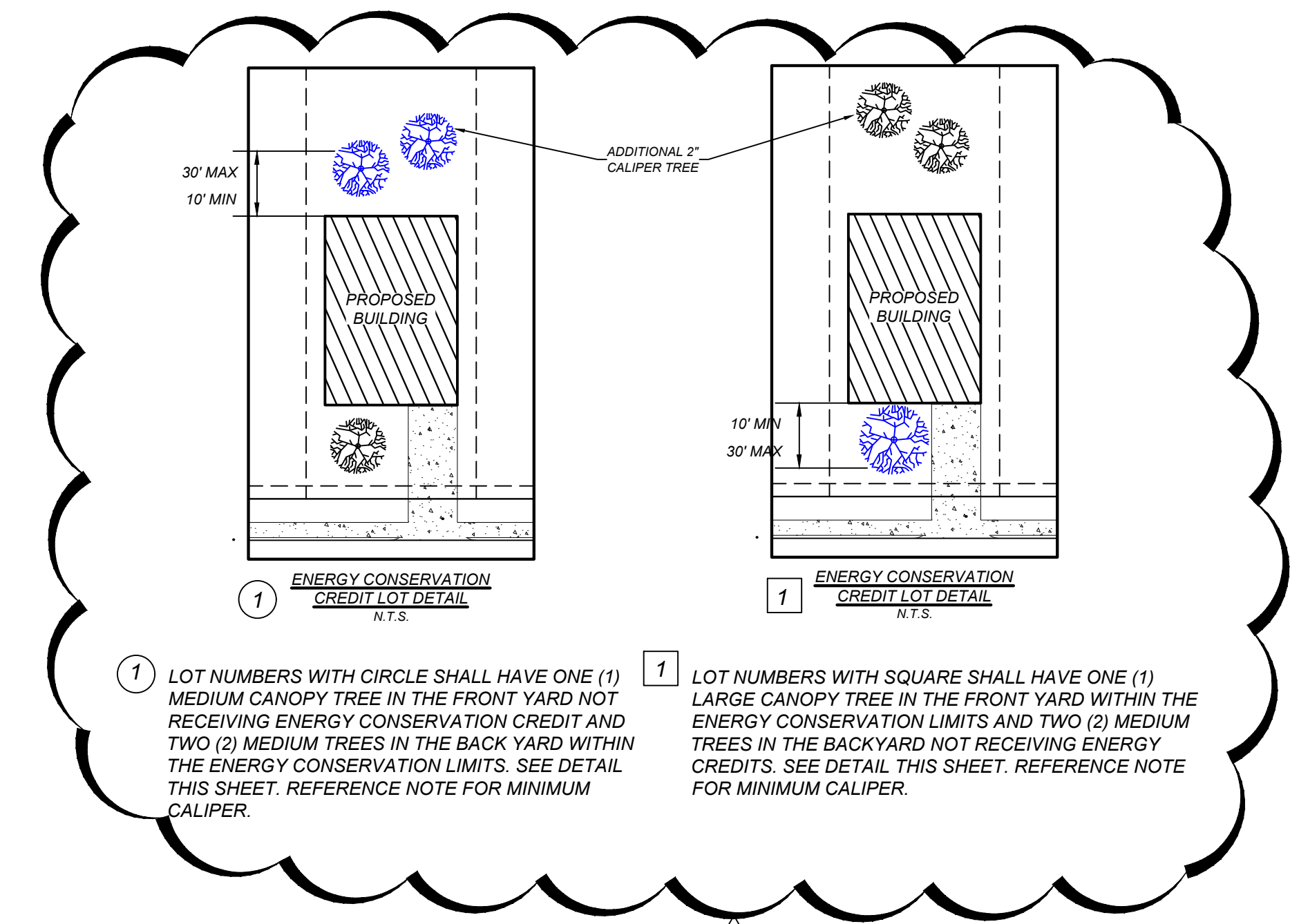
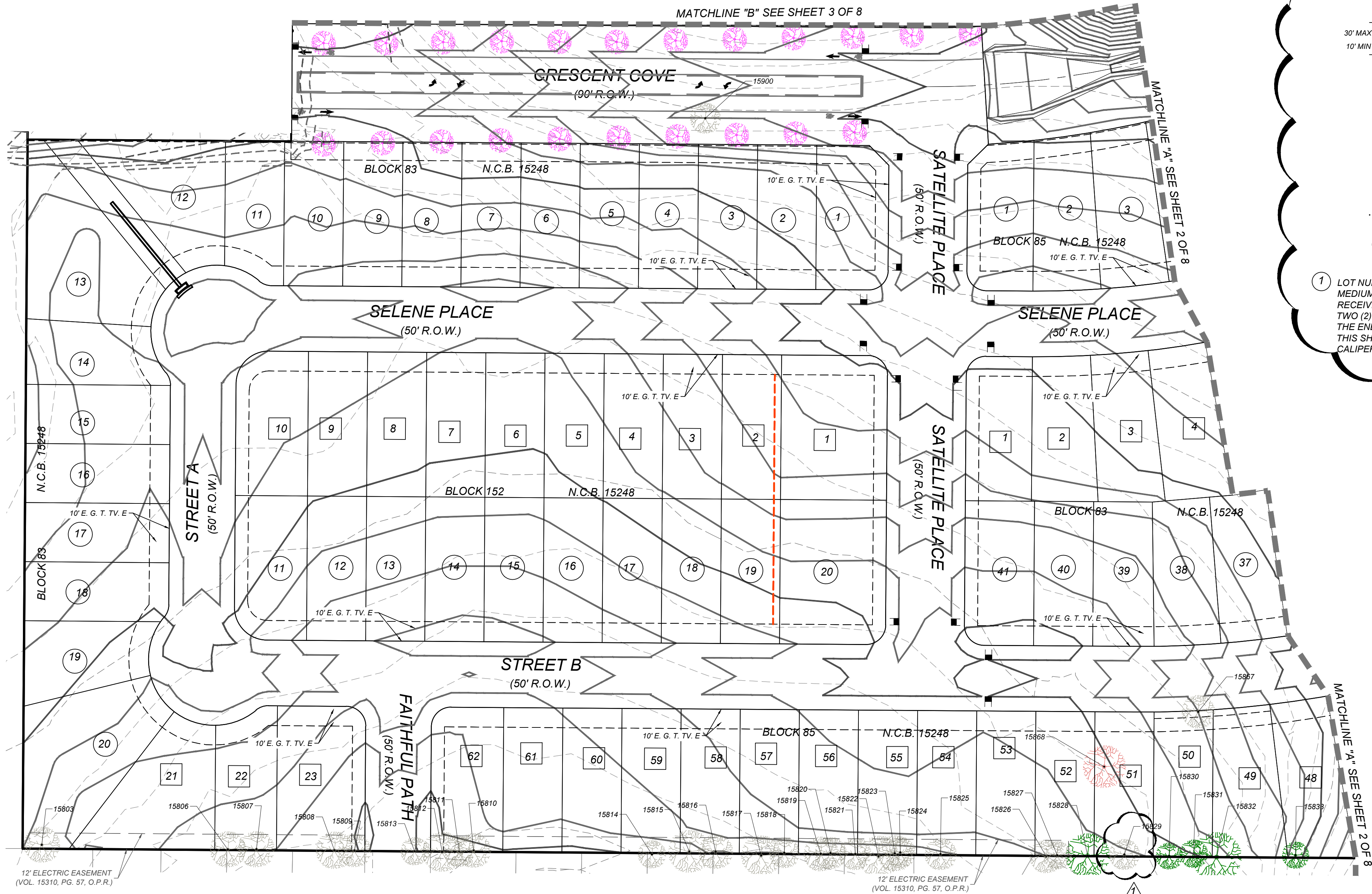
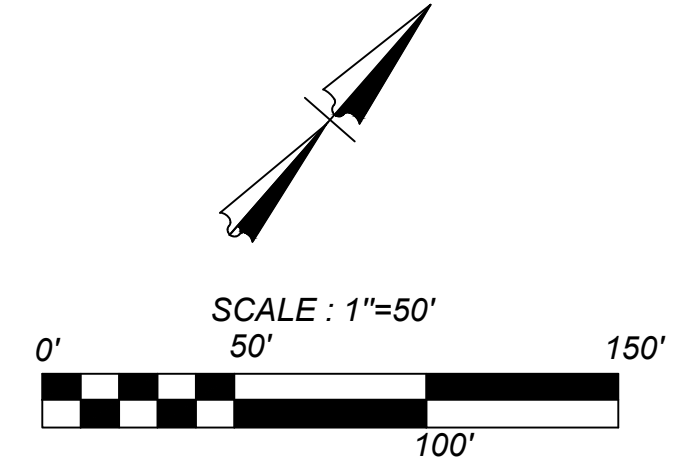


LOCATION MAP  
N.T.S.



**LEGEND**

- REMOVED
- PRESERVED
- EXEMPT
- REMOVED - FEMA
- PRESERVED - FEMA
- REMOVED - RIPARIAN BUFFER
- PRESERVED - RIPARIAN BUFFER
- PROPOSED 3" CALIPER STREETSCAPE TREES
- PROJECT LIMITS
- PROPOSED 100-YR FLOODPLAIN LIMITS
- 30' RIPARIAN BUFFER



**CONTRACTOR NOTE:**  
THE CONTRACTOR SHALL BE RESPONSIBLE TO SCHEDULE A PRE CONSTRUCTION MEETING PRIOR TO SITE DEVELOPMENT TO STAY IN COMPLIANCE WITH THE UNIFIED DEVELOPMENT CODE SECTION 35-477 (5) (C); WHICH STATES A PRE CONSTRUCTION MEETING IS REQUIRED TO REVIEW PROCEDURES FOR PROTECTION AND MANAGEMENT OF ALL SIGNIFICANT, HERITAGE OR MITIGATION TREES. THIS CAN BE SCHEDULED WITH FENCING INSPECTION, 207-1111. REFERENCE AP #2629170

**IMPORTANT NOTE:**  
2 - MINIMUM - 2 INCH CALIPER MEDIUM-LARGE CANOPY SHADE TREES TO BE PLANTED PER LOT. A MEDIUM - LARGE CANOPY TREE IS DESIGNATED IN CITY OF SAN ANTONIO UNIFIED DEVELOPMENT CODE APPENDIX E.

**K&W**  
**ENGINEERS + SURVEYING**  
Phone # (210) 878-8444 • Fax # (210) 878-8441  
TBPE Firm #: 9513 • TBPE License #: 10122300

**REVISIONS**

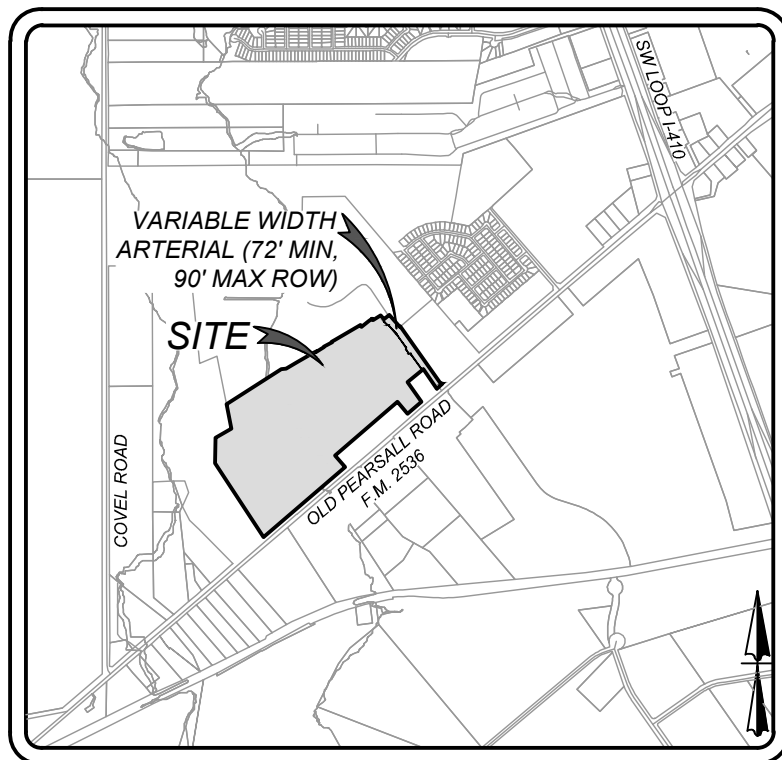
1	EXEMPTION/DECLAY STATUS DUE TO ROOT PROTECTION BY INSPECTOR	1/19/2023
2	CHANGE OF PLANTING DESIGNATIONS ON LOT 51 FOR MITIGATION FOR INSPECTOR COMMENTS	1/19/2023

**CRESCENT HILLS UNITS 2 & 3**  
SAN ANTONIO, TEXAS  
**TREE PRESERVATION PLAN**

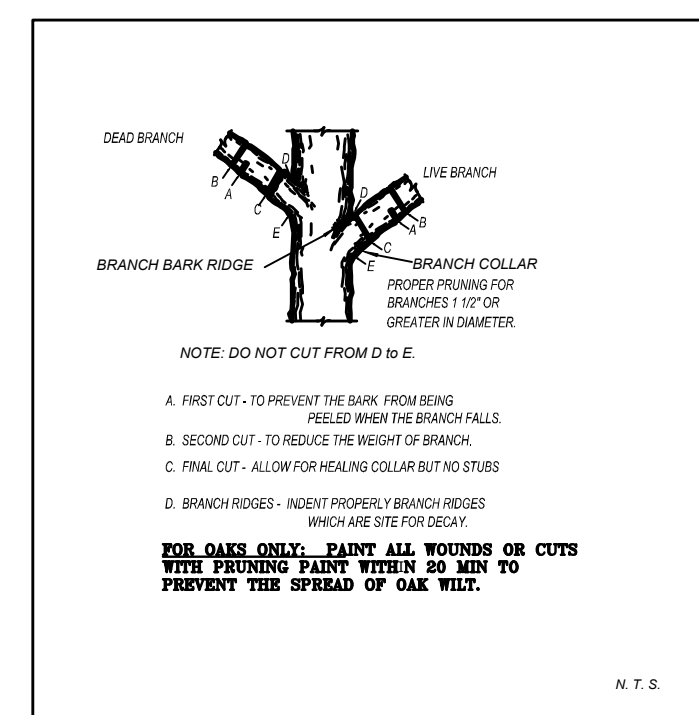
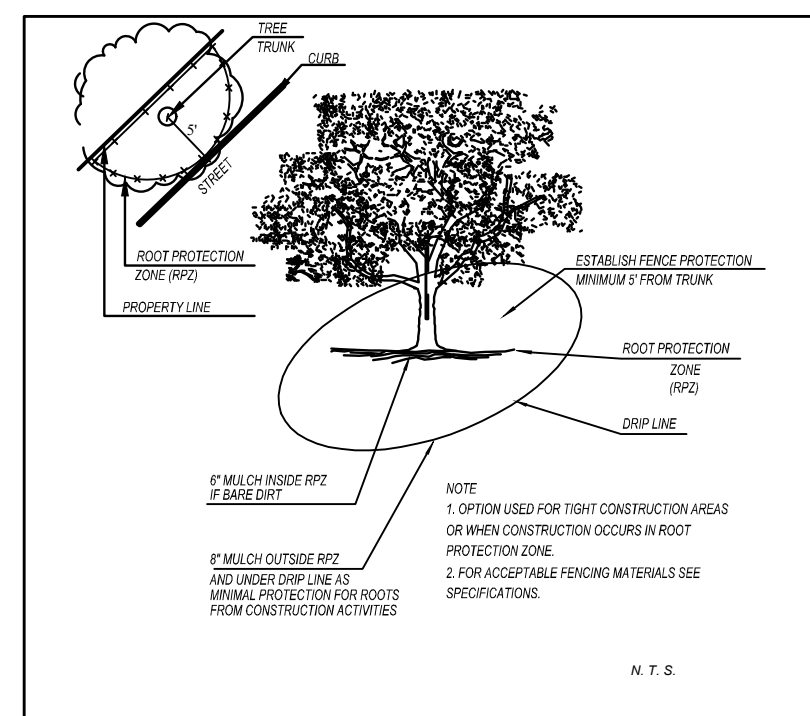
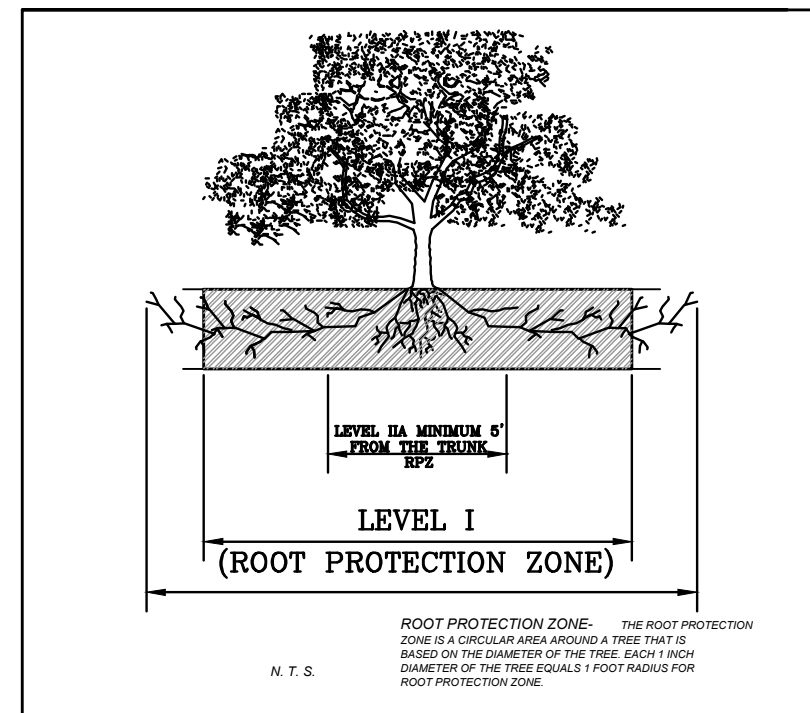
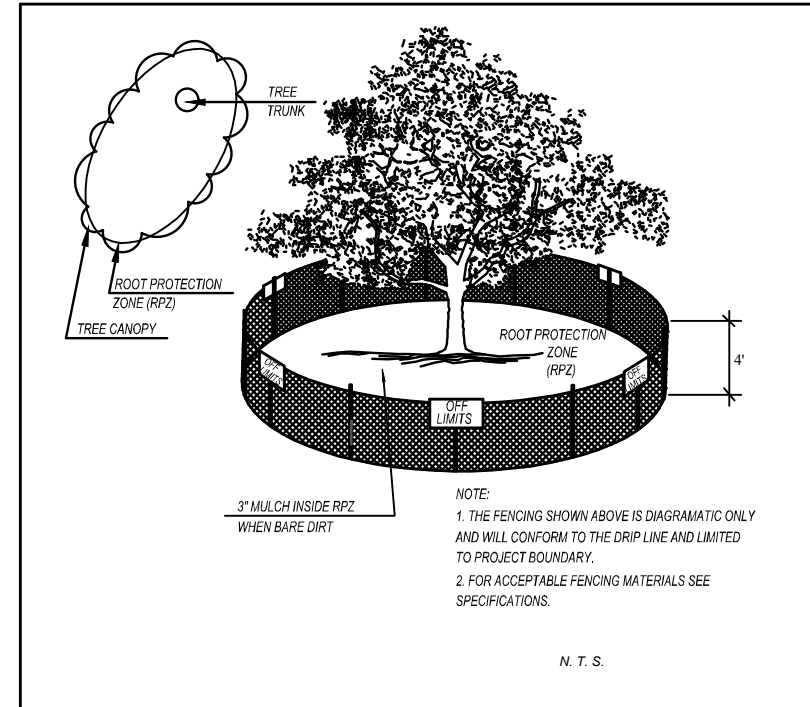
PLAT NO.  
21-11800142  
JOB NO. 314-36-03  
DATE: MAY 2021  
DRAWN: CHECKED: TE  
SHEET NUMBER:  
**2 OF 8**

Date: Jan 19, 2023, 2:18pm User: ID: Atirgson  
File: R:\14\08\05\Design\CDM\TREES\TP21143603.dwg





LOCATION MAP  
N.T.S.



**CONTRACTOR NOTE:**

THE CONTRACTOR SHALL BE RESPONSIBLE TO SCHEDULE A PRE CONSTRUCTION MEETING PRIOR TO SITE DEVELOPMENT TO STAY IN COMPLIANCE WITH THE UNIFIED DEVELOPMENT CODE SECTION 35-477 (5) (C); WHICH STATES A PRE CONSTRUCTION MEETING IS REQUIRED TO REVIEW PROCEDURES FOR PROTECTION AND MANAGEMENT OF ALL SIGNIFICANT, HERITAGE OR MITIGATION TREES. THIS CAN BE SCHEDULED WITH FENCING INSPECTION, 207-1111. REFERENCE AP #

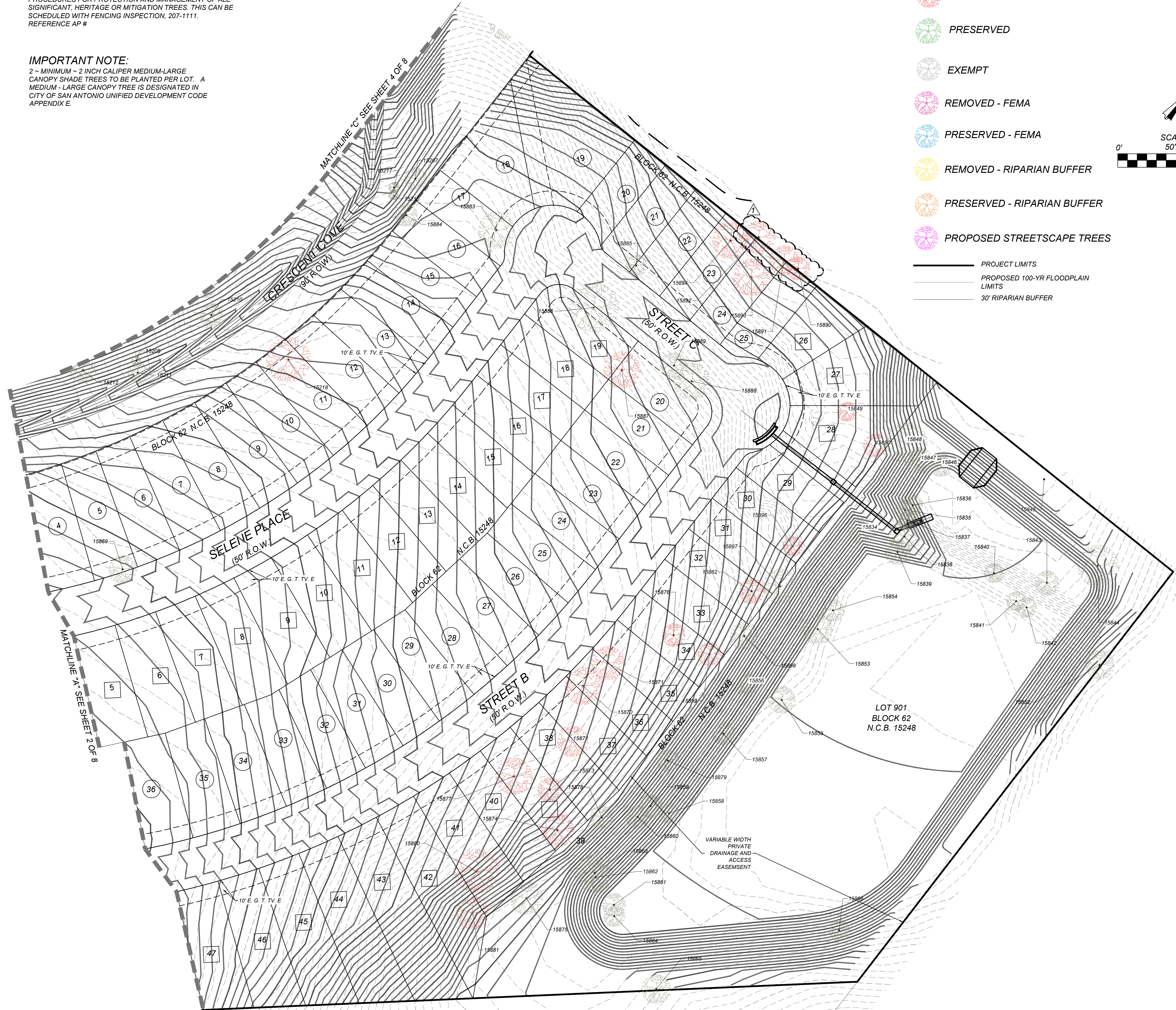
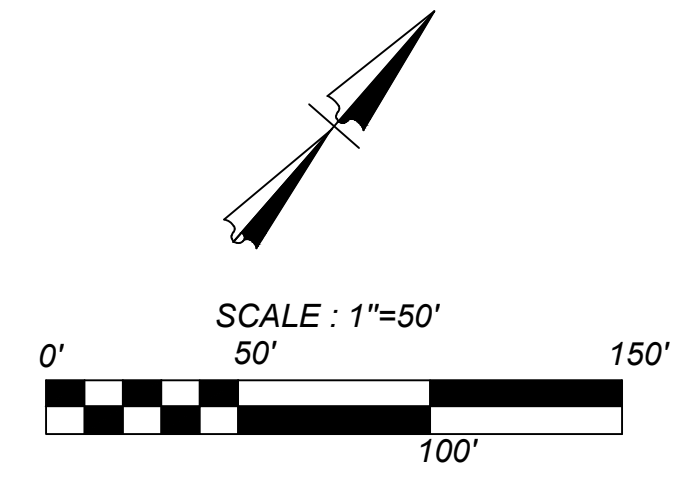
**IMPORTANT NOTE:**

2 - MINIMUM 2 INCH CALIPER MEDIUM-LARGE CANOPY SHADE TREES TO BE PLANTED PER LOT. A MEDIUM - LARGE CANOPY TREE IS DESIGNATED IN CITY OF SAN ANTONIO UNIFIED DEVELOPMENT CODE APPENDIX E.

**LEGEND**

- REMOVED
- PRESERVED
- EXEMPT
- REMOVED - FEMA
- PRESERVED - FEMA
- REMOVED - RIPARIAN BUFFER
- PRESERVED - RIPARIAN BUFFER
- PROPOSED STREETSCAPE TREES

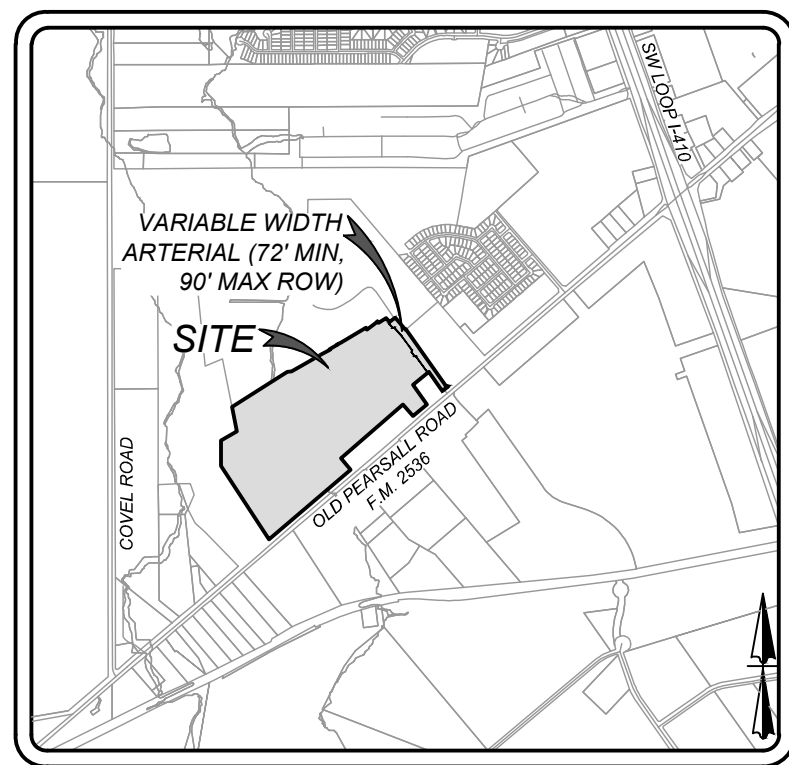
- PROJECT LIMITS
- PROPOSED 100-YR FLOODPLAIN LIMITS
- 30' RIPARIAN BUFFER



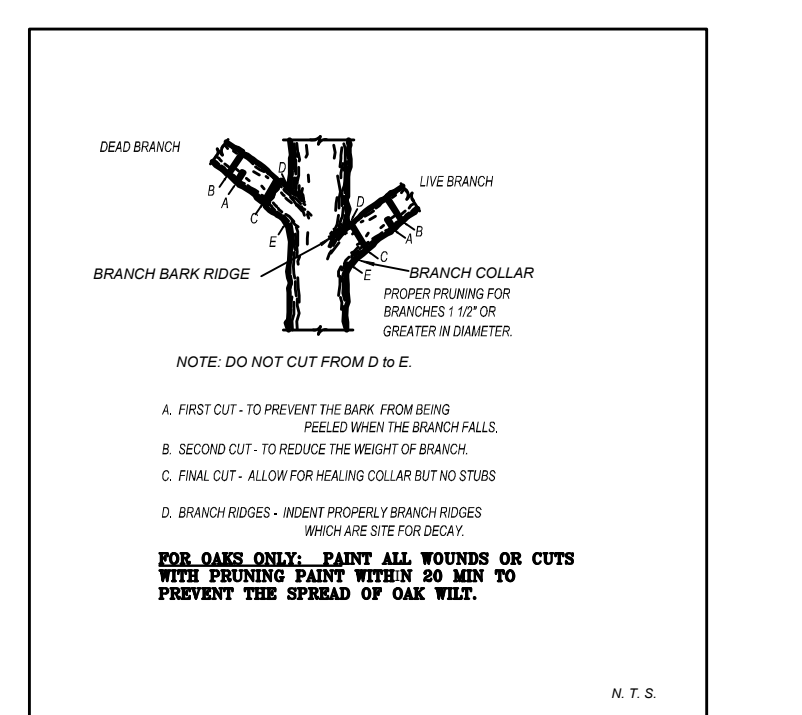
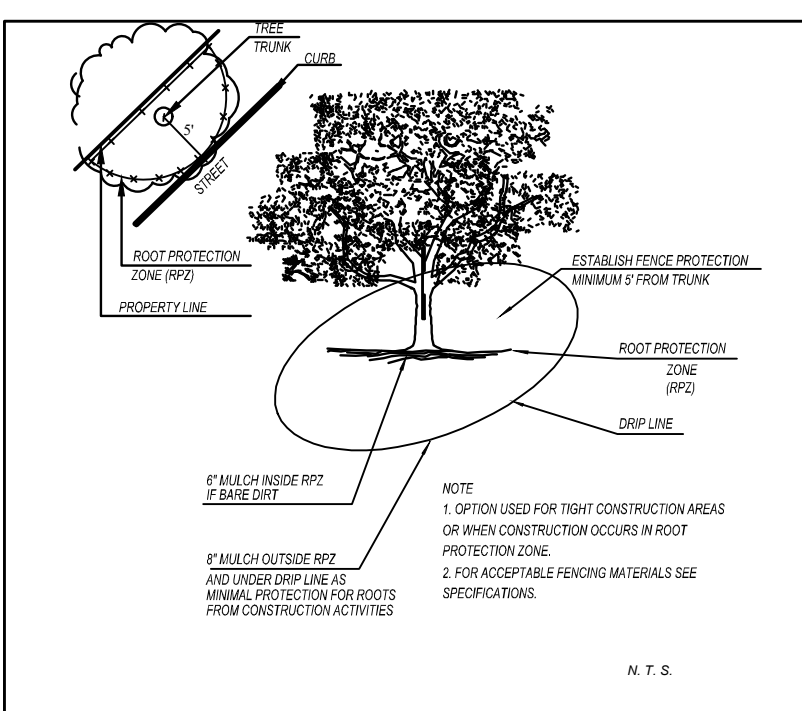
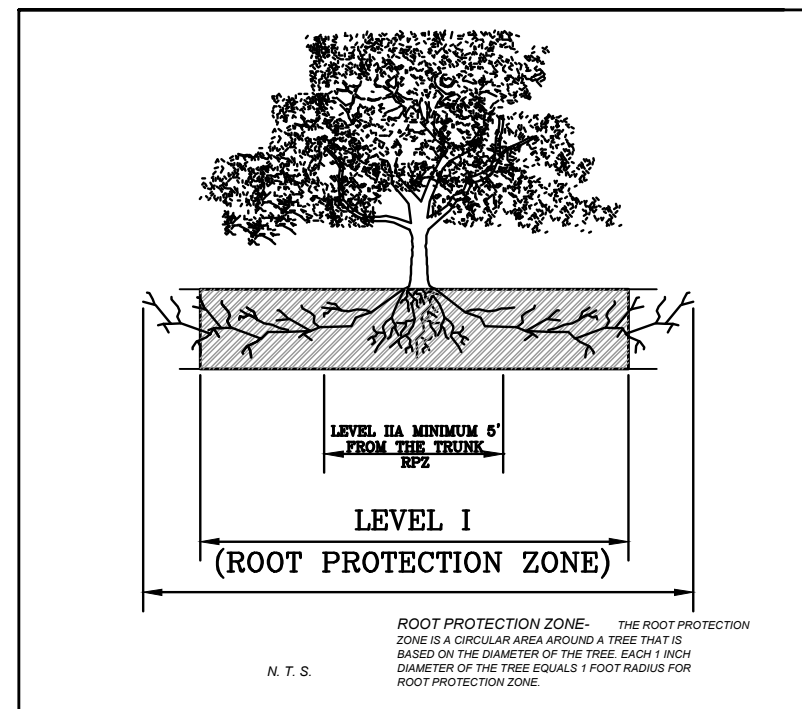
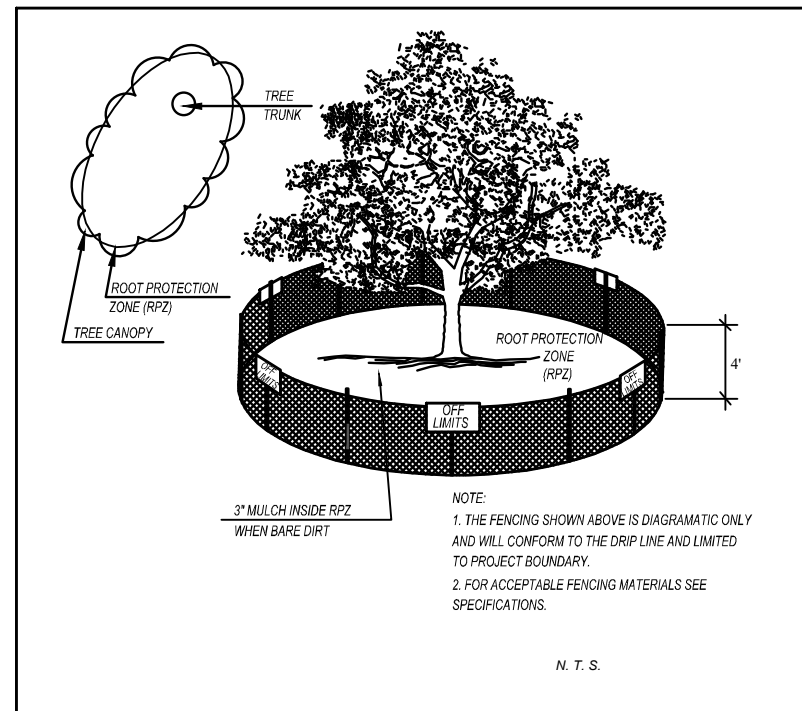
Date: Jan 19, 2023, 2:15pm User: ID: AtIurgson  
File: N:\14\28\03\Design\K&W\TREES\TIPS14\_3603.dwg

THIS DOCUMENT HAS BEEN PRODUCED FROM MATERIAL THAT WAS STORED AND/OR TRANSMITTED ELECTRONICALLY AND MAY HAVE BEEN INADVERTENTLY ALTERED. RELY ONLY ON FINAL HARD COPY MATERIALS BEARING THE CONSULTANT'S ORIGINAL SIGNATURE AND SEAL.



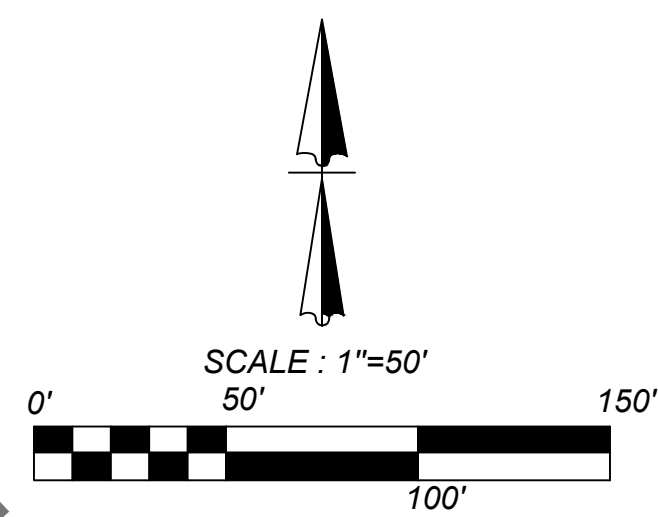


LOCATION MAP  
N.T.S.



**CONTRACTOR NOTE:**  
THE CONTRACTOR SHALL BE RESPONSIBLE TO SCHEDULE A PRE CONSTRUCTION MEETING PRIOR TO SITE DEVELOPMENT TO STAY IN COMPLIANCE WITH THE UNIFIED DEVELOPMENT CODE SECTION 35-477 (5) (C); WHICH STATES A PRE CONSTRUCTION MEETING IS REQUIRED TO REVIEW PROCEDURES FOR PROTECTION AND MANAGEMENT OF ALL SIGNIFICANT, HERITAGE OR MITIGATION TREES. THIS CAN BE SCHEDULED WITH FENCING INSPECTION, 207-1111. REFERENCE AP #

**IMPORTANT NOTE:**  
2 - MINIMUM - 2 INCH CALIPER MEDIUM-LARGE CANOPY SHADE TREES TO BE PLANTED PER LOT. A MEDIUM - LARGE CANOPY TREE IS DESIGNATED IN CITY OF SAN ANTONIO UNIFIED DEVELOPMENT CODE APPENDIX E.



**LEGEND**

	REMOVED		REMOVED - RIPARIAN BUFFER
	PRESERVED		PRESERVED - RIPARIAN BUFFER
	EXEMPT		PROPOSED 3" CALIPER STREETSCAPE TREES
	REMOVED - FEMA		PROJECT LIMITS
	PRESERVED - FEMA		PROPOSED 100-YR FLOODPLAIN LIMITS
			30' RIPARIAN BUFFER

REVISIONS

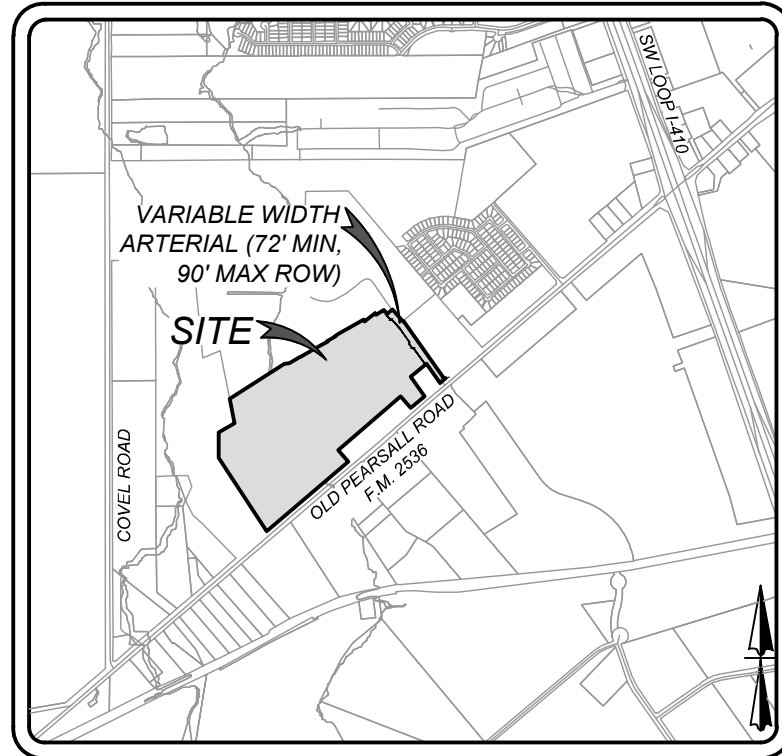
NO.	DESCRIPTION	DATE
1	REMOVAL OF TREE	11/9/2023
2	DUE 50% OF RPZ	
3	BY INSPECTOR	

**CRESCENT HILLS UNITS 2 & 3**  
SAN ANTONIO, TEXAS  
**TREE PRESERVATION PLAN**

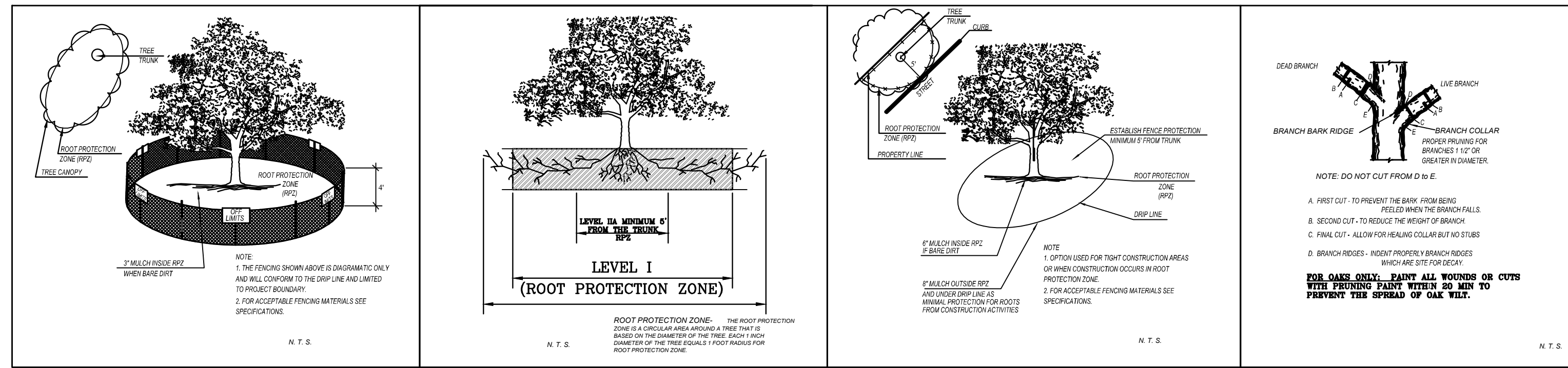
Date: Jan 19, 2023, 2:18pm User: ID: Atiturgeon  
File: N:\14\26\03\Design\Civil\TREES\TPP3143603.dwg

THIS DOCUMENT HAS BEEN PRODUCED FROM MATERIAL THAT WAS STORED AND/OR TRANSMITTED ELECTRONICALLY AND MAY HAVE BEEN INADVERTENTLY ALTERED. RELY ONLY ON FINAL HARD COPY MATERIALS BEARING THE CONSULTANT'S ORIGINAL SIGNATURE AND SEAL.





LOCATION MAP  
N.T.S.

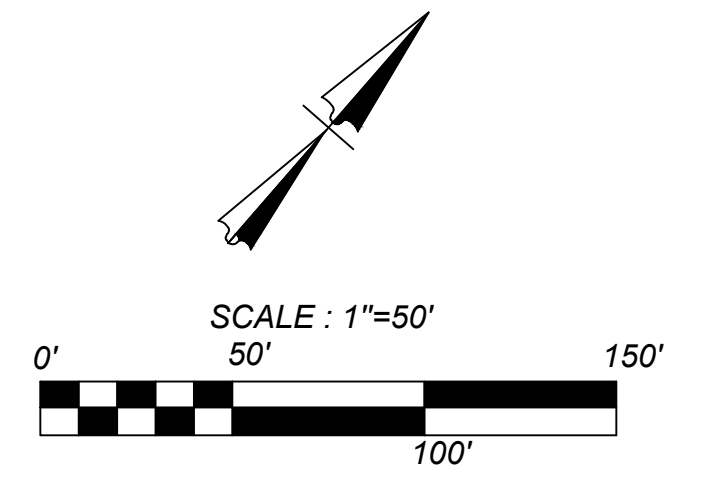


**CONTRACTOR NOTE:**

THE CONTRACTOR SHALL BE RESPONSIBLE TO SCHEDULE A PRE CONSTRUCTION MEETING PRIOR TO SITE DEVELOPMENT TO STAY IN COMPLIANCE WITH THE UNIFIED DEVELOPMENT CODE SECTION 35-477 (5) (C), WHICH STATES A PRE CONSTRUCTION MEETING IS REQUIRED TO REVIEW PROCEDURES FOR PROTECTION AND MANAGEMENT OF ALL SIGNIFICANT, HERITAGE OR MITIGATION TREES. THIS CAN BE SCHEDULED WITH FENCING INSPECTION, 207-1111. REFERENCE AP #

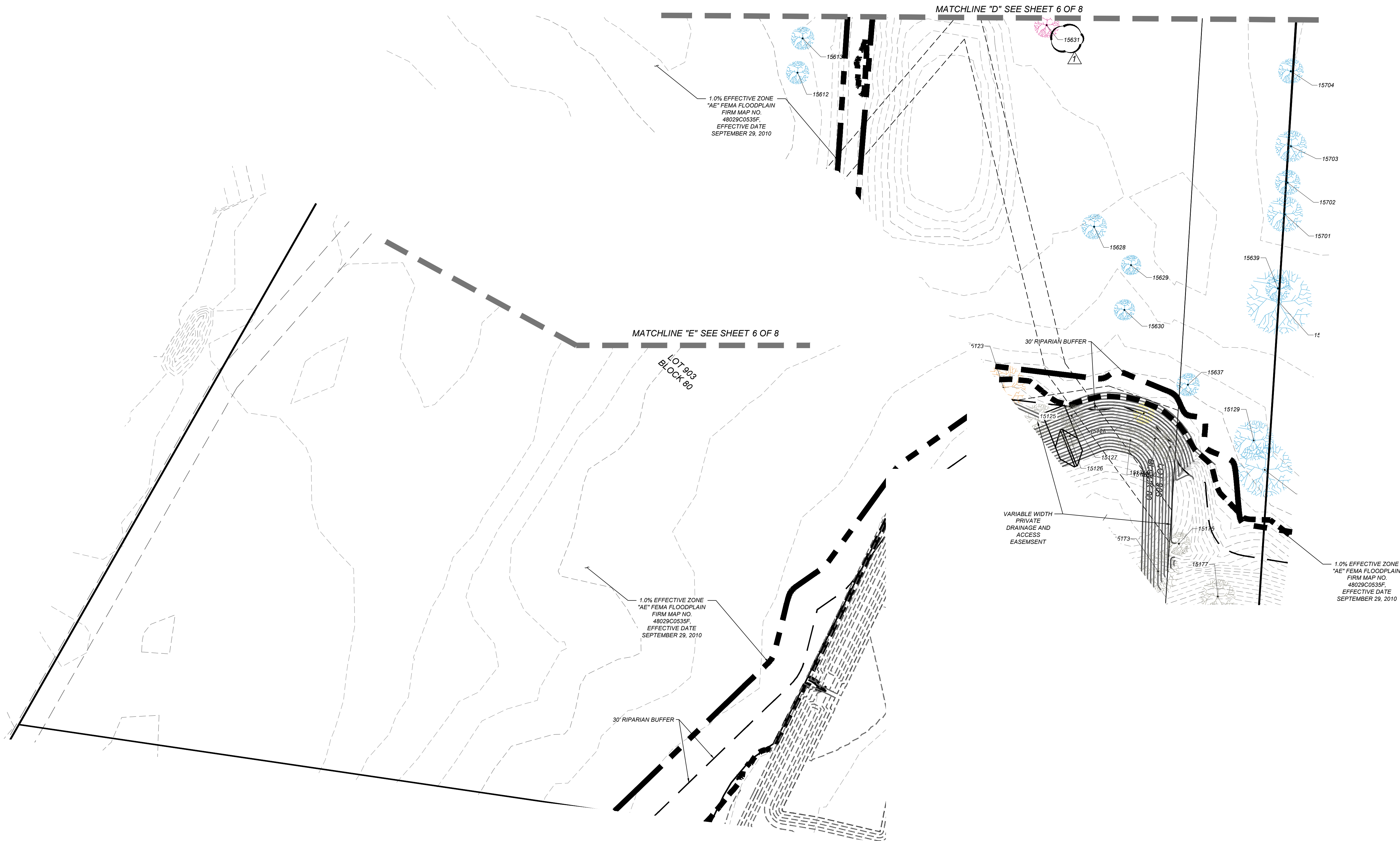
**IMPORTANT NOTE:**

2 - MINIMUM - 2 INCH CALIPER MEDIUM-LARGE CANOPY SHADE TREES TO BE PLANTED PER LOT. A MEDIUM - LARGE CANOPY TREE IS DESIGNATED IN CITY OF SAN ANTONIO UNIFIED DEVELOPMENT CODE APPENDIX E.

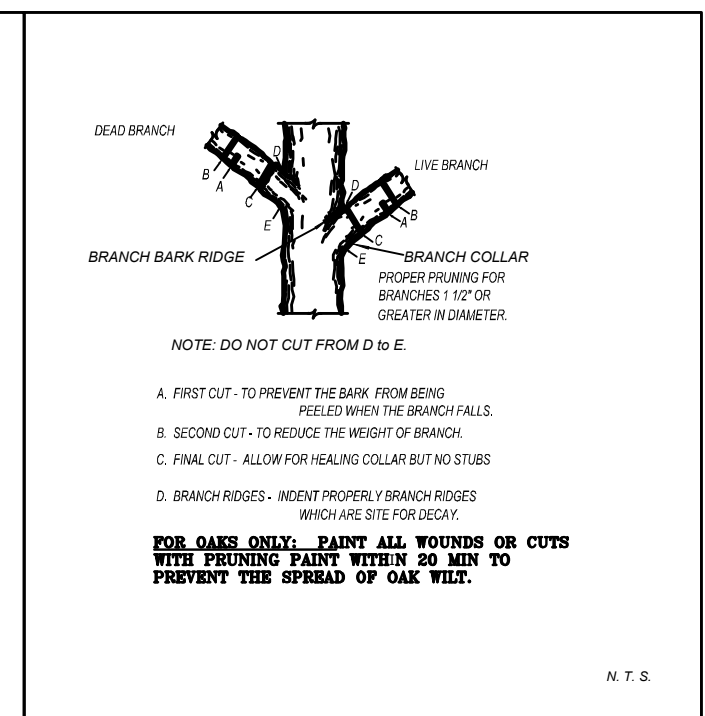
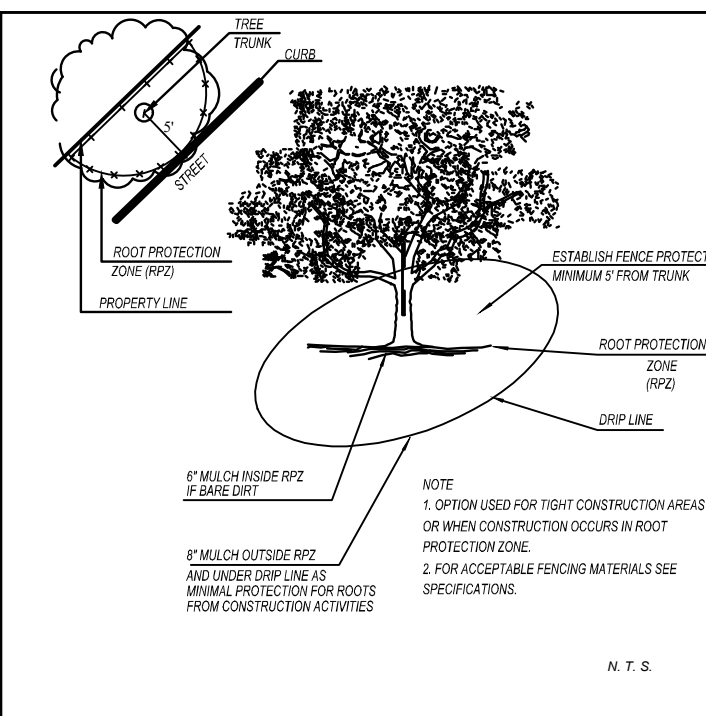
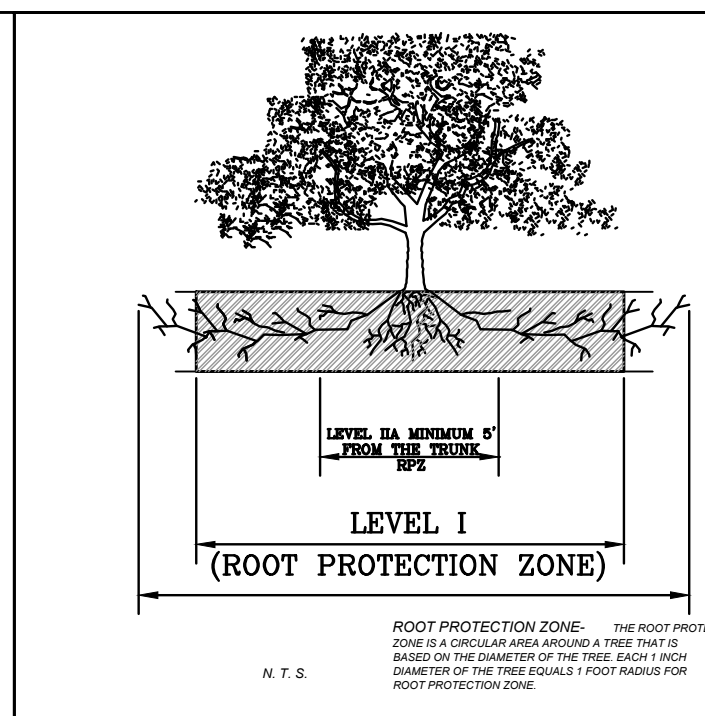
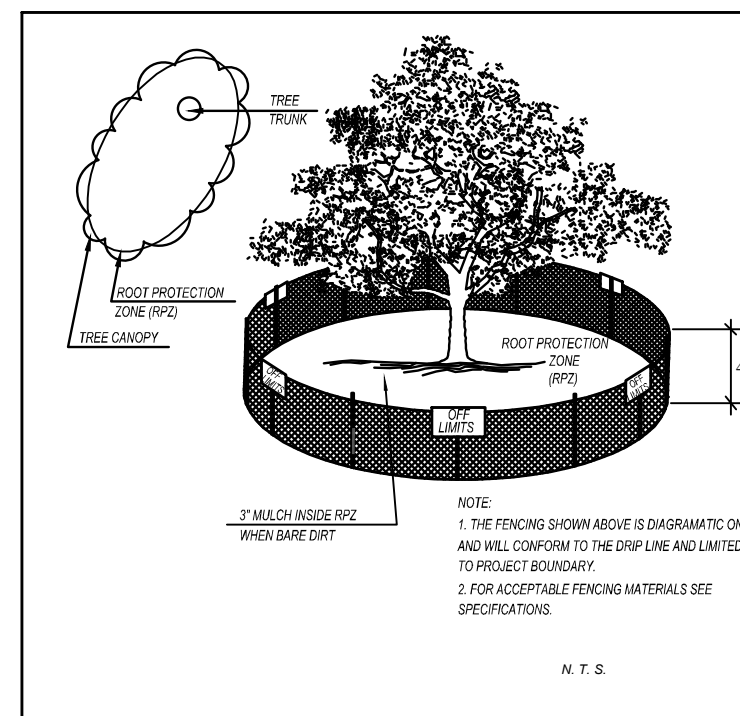
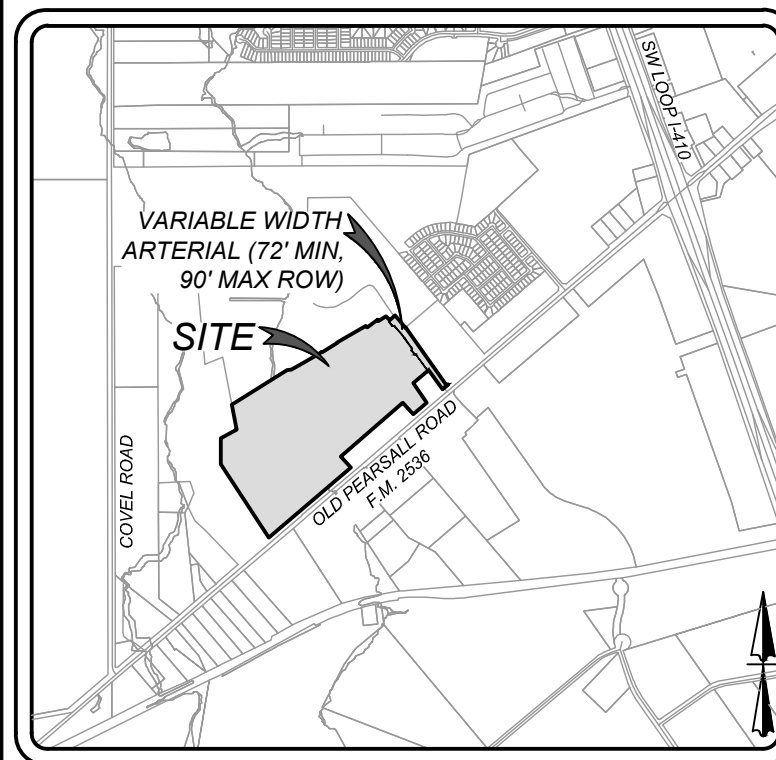


**LEGEND**

- REMOVED
- PRESERVED
- EXEMPT
- REMOVED - FEMA
- PRESERVED - FEMA
- REMOVED - RIPARIAN BUFFER
- PRESERVED - RIPARIAN BUFFER
- PROPOSED STREETSCAPE TREES
- PROJECT LIMITS
- PROPOSED 100-YR FLOODPLAIN LIMITS
- 30' RIPARIAN BUFFER





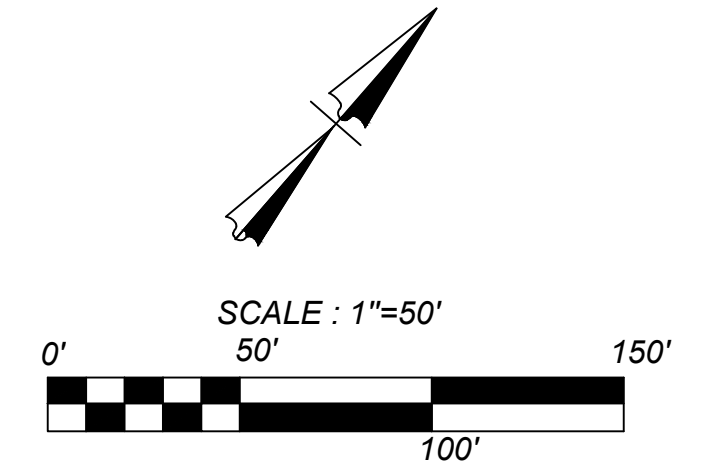


**CONTRACTOR NOTE:**

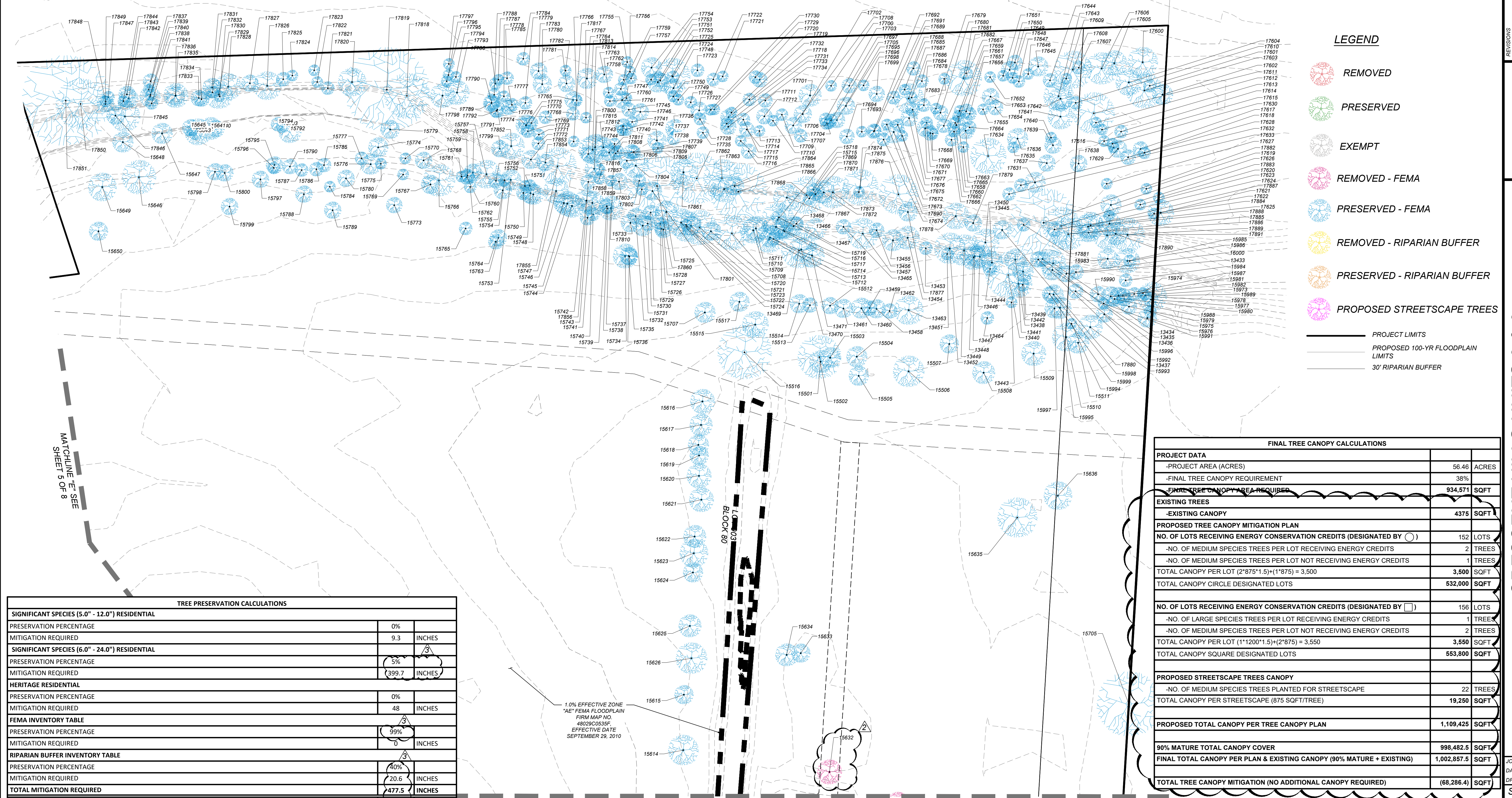
THE CONTRACTOR SHALL BE RESPONSIBLE TO SCHEDULE A PRE CONSTRUCTION MEETING PRIOR TO SITE DEVELOPMENT TO STAY IN COMPLIANCE WITH THE UNIFIED DEVELOPMENT CODE SECTION 35-477 (5) (C), WHICH STATES A PRE CONSTRUCTION MEETING IS REQUIRED TO REVIEW PROCEDURES FOR PROTECTION AND MANAGEMENT OF ALL SIGNIFICANT, HERITAGE OR MITIGATION TREES. THIS CAN BE SCHEDULED WITH FENCING INSPECTION, 207-1111. REFERENCE AP #

**IMPORTANT NOTE:**

2 - MINIMUM - 2 INCH CALIPER MEDIUM-LARGE CANOPY SHADE TREES TO BE PLANTED PER LOT. A MEDIUM - LARGE CANOPY TREE IS DESIGNATED IN CITY OF SAN ANTONIO UNIFIED DEVELOPMENT CODE APPENDIX E.



LOCATION MAP N.T.S.



**LEGEND**

- REMOVED
- PRESERVED
- EXEMPT
- REMOVED - FEMA
- PRESERVED - FEMA
- REMOVED - RIPARIAN BUFFER
- PRESERVED - RIPARIAN BUFFER
- PROPOSED STREETSCAPE TREES

- PROJECT LIMITS
- PROPOSED 100-YR FLOODPLAIN LIMITS
- 30' RIPARIAN BUFFER

FINAL TREE CANOPY CALCULATIONS	
<b>PROJECT DATA</b>	
-PROJECT AREA (ACRES)	56.46 ACRES
-FINAL TREE CANOPY REQUIREMENT	38%
<b>FINAL TREE CANOPY AREA REQUIRED</b>	<b>934,571 SQFT</b>
<b>EXISTING TREES</b>	
-EXISTING CANOPY	4375 SQFT
<b>PROPOSED TREE CANOPY MITIGATION PLAN</b>	
NO. OF LOTS RECEIVING ENERGY CONSERVATION CREDITS (DESIGNATED BY ○)	152 LOTS
-NO. OF MEDIUM SPECIES TREES PER LOT RECEIVING ENERGY CREDITS	2 TREES
-NO. OF MEDIUM SPECIES TREES PER LOT NOT RECEIVING ENERGY CREDITS	1 TREES
TOTAL CANOPY PER LOT (2*875*1.5)+(1*875) = 3,500	3,500 SQFT
TOTAL CANOPY CIRCLE DESIGNATED LOTS	532,000 SQFT
<b>PROPOSED STREETSCAPE TREES CANOPY</b>	
-NO. OF MEDIUM SPECIES TREES PLANTED FOR STREETSCAPE	22 TREES
TOTAL CANOPY PER STREETSCAPE (875 SQFT/TREE)	19,250 SQFT
<b>PROPOSED TOTAL CANOPY PER TREE CANOPY PLAN</b>	<b>1,109,425 SQFT</b>
<b>90% MATURE TOTAL CANOPY COVER</b>	<b>998,482.5 SQFT</b>
<b>FINAL TOTAL CANOPY PER PLAN &amp; EXISTING CANOPY (90% MATURE + EXISTING)</b>	<b>1,002,857.5 SQFT</b>
<b>TOTAL TREE CANOPY MITIGATION (NO ADDITIONAL CANOPY REQUIRED)</b>	<b>(68,286.4) SQFT</b>

TREE PRESERVATION CALCULATIONS		
<b>SIGNIFICANT SPECIES (5.0" - 12.0") RESIDENTIAL</b>		
PRESERVATION PERCENTAGE	0%	
MITIGATION REQUIRED	9.3	INCHES
<b>SIGNIFICANT SPECIES (6.0" - 24.0") RESIDENTIAL</b>		
PRESERVATION PERCENTAGE	5%	
MITIGATION REQUIRED	399.7	INCHES
<b>HERITAGE RESIDENTIAL</b>		
PRESERVATION PERCENTAGE	0%	
MITIGATION REQUIRED	48	INCHES
<b>FEMA INVENTORY TABLE</b>		
PRESERVATION PERCENTAGE	99%	
MITIGATION REQUIRED	0	INCHES
<b>RIPARIAN BUFFER INVENTORY TABLE</b>		
PRESERVATION PERCENTAGE	40%	
MITIGATION REQUIRED	20.6	INCHES
<b>TOTAL MITIGATION REQUIRED</b>	<b>477.5</b>	<b>INCHES</b>
ADDITIONAL INCHES FROM THIRD TREE PLANTED IN ALL LOTS (2 INCHES/TREE * 308 TREES = 616 INCHES)		
	616	INCHES
ADDITIONAL INCHES FROM UPSIZING STREETSCAPE TREES (1.5 INCHES/TREE * 22 TREES = 33 INCHES)		
	33	INCHES
<b>TOTAL MITIGATION REQUIRED AFTER PLANTING</b>	<b>(171.5)</b>	<b>INCHES</b>

1.0% EFFECTIVE ZONE  
"AE" FEMA FLOODPLAIN  
FIRM MAP NO. 4802C00305E  
EFFECTIVE DATE SEPTEMBER 29, 2010

Date: Jan 19, 2023, 2:23pm User: D: Atiurgenon  
File: N:\14\03\05\Design\KCM\Trees\TIP214\_5603.dwg

REVISIONS  
REMOVAL OF TREES 11/03/2021  
DUE TO PROPOSED  
RETAINING WALL  
REMOVAL OF TREE IN  
REAR OF LOT  
BASEMENT  
1/19/2023  
CHANGE OF CALC  
DUE TO INSPECTOR  
OBSERVATION



FEMA INVENTORY TABLE table with columns: POINT, SPECIES, PRESER VED, REMO VED. Rows 13433-15710.

FEMA INVENTORY TABLE table with columns: POINT, SPECIES, PRESER VED, REMO VED. Rows 15711-17000.

FEMA INVENTORY TABLE table with columns: POINT, SPECIES, PRESER VED, REMO VED. Rows 17001-18300.

FEMA INVENTORY TABLE table with columns: POINT, SPECIES, PRESER VED, REMO VED. Rows 18301-19600.

FEMA INVENTORY TABLE table with columns: POINT, SPECIES, PRESER VED, REMO VED. Rows 19601-21000.

EXEMPT TREES INVENTORY TABLE table with columns: POINT, SPECIES, PRESER VED, REMO VED. Rows 13487-15884.

EXEMPT TREES INVENTORY TABLE table with columns: POINT, SPECIES, PRESER VED, REMO VED. Rows 15885-15950.

SIGNIFICANT SPECIES (5.0" - 12.0") SMALL SPECIES INVENTORY TABLE. Summary table for points 15153, 15188, 15189, 15193, 15932.

HERITAGE SPECIES (24.0 & UP") INVENTORY TABLE (1:1). Summary table for points 15194, 15926.

RIPARIAN BUFFER INVENTORY TABLE. Summary table for points 13489, 15128, 15627.

SIGNIFICANT SPECIES (6.0" - 24.0") MEDIUM TO LARGE INVENTORY TABLE. Summary table for points 13472-15972.



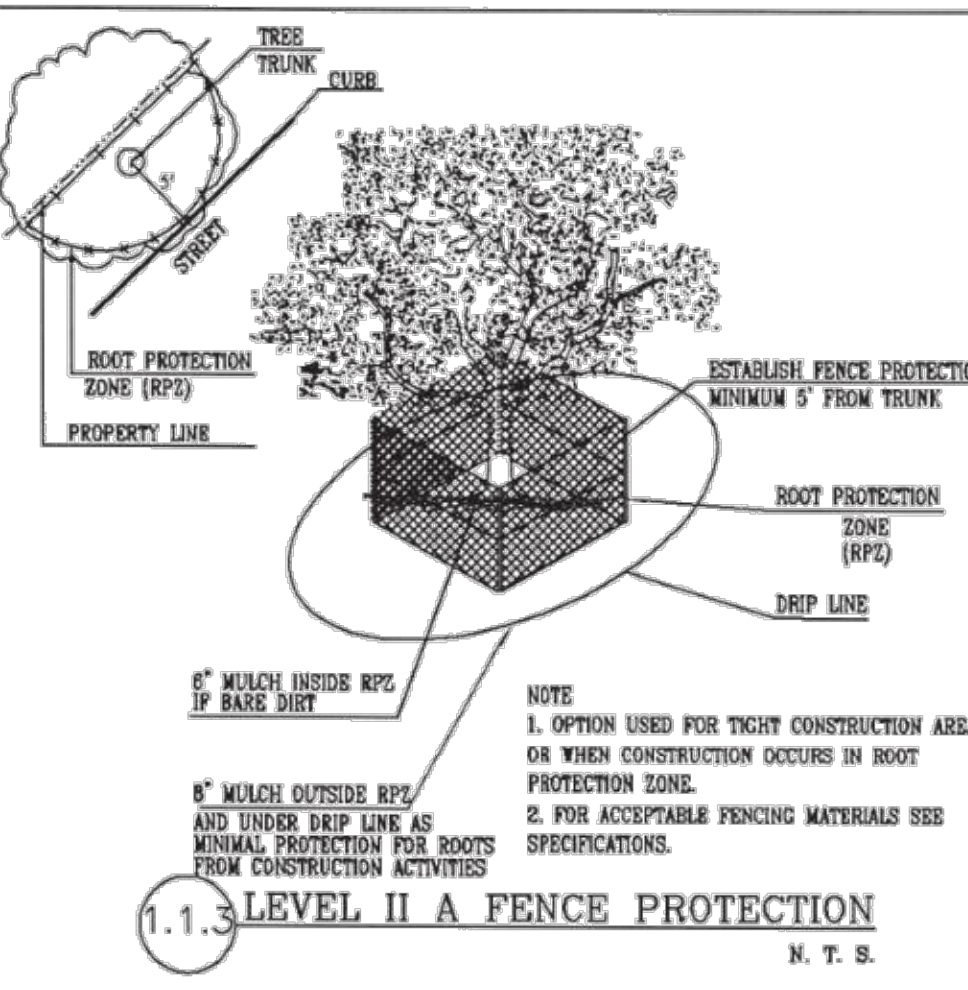
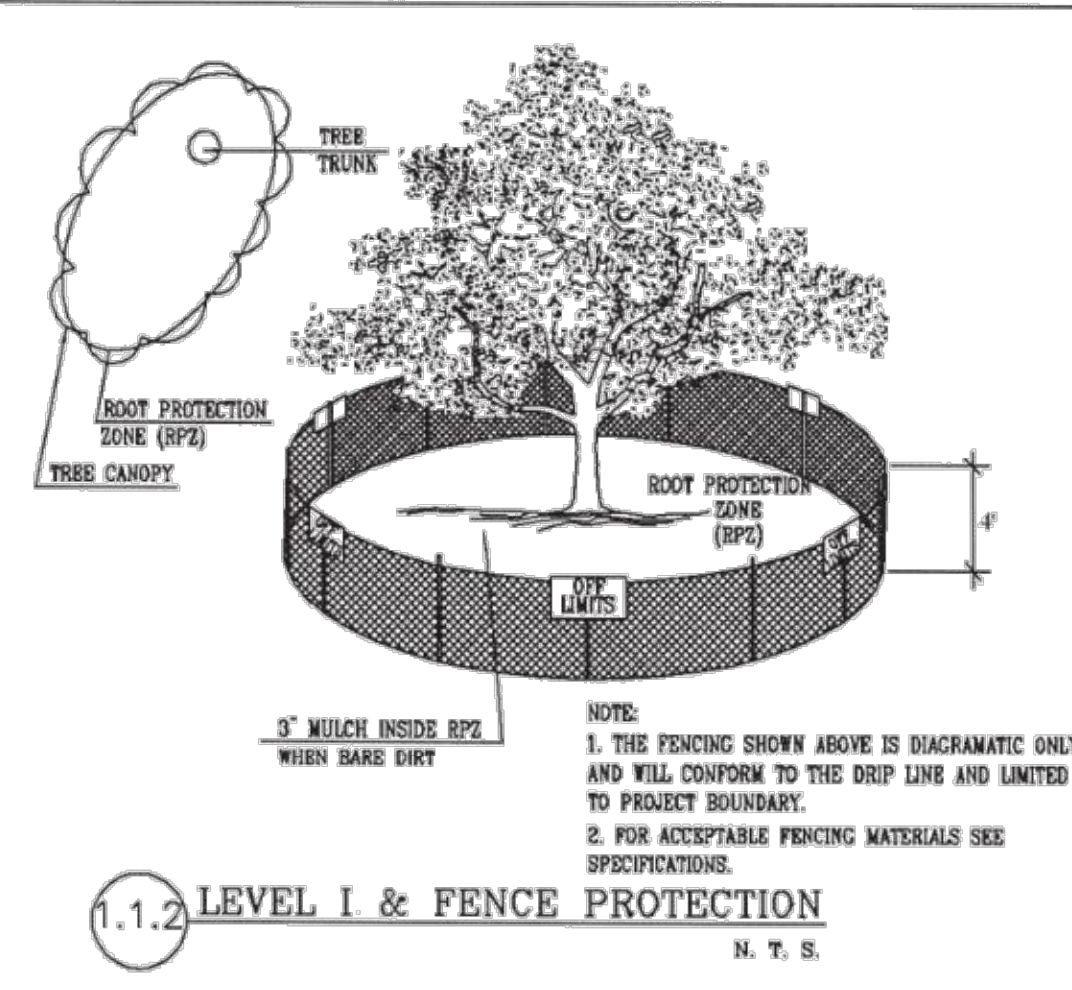
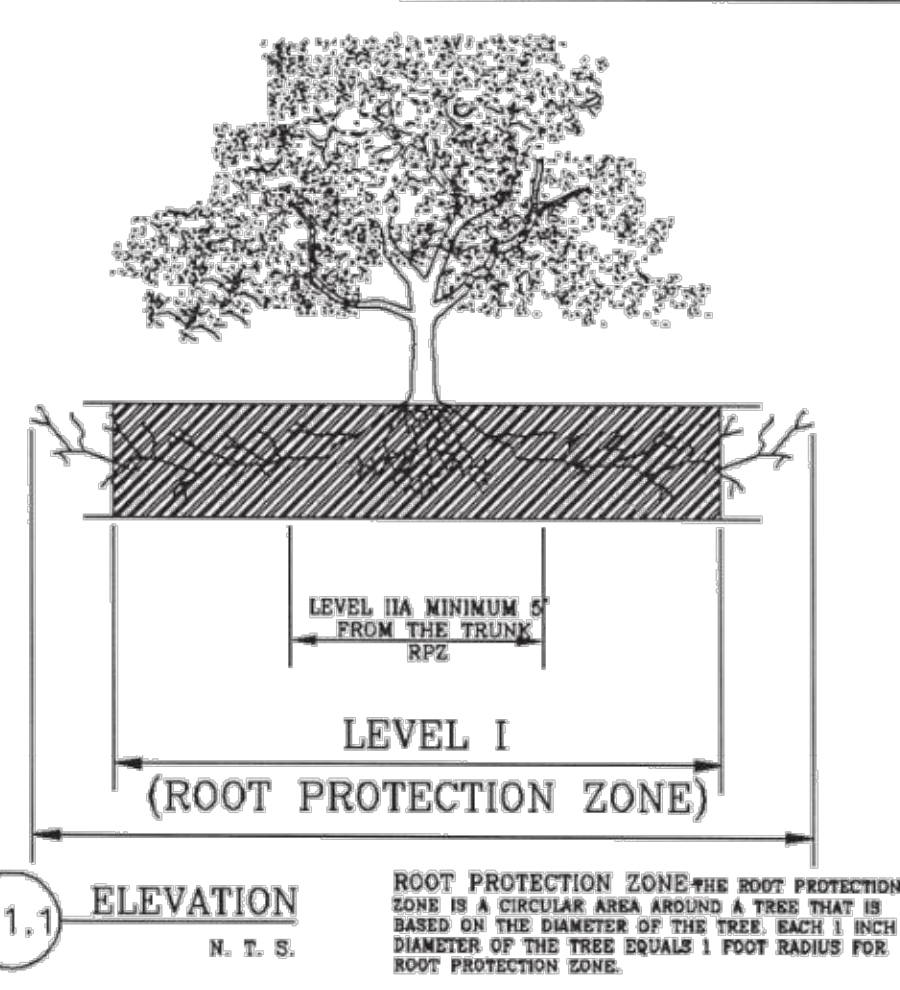
REVISIONS: REMOVAL OF TREES DUE TO PROPOSED REMAINING TREES TO BE PROPOSED SEWER EASEMENT. CHANGE OF CALC DUE TO INSPECTOR OBSERVATION.

CRESCENT HILLS UNITS 2 & 3 SAN ANTONIO, TEXAS TREE PRESERVATION PLAN

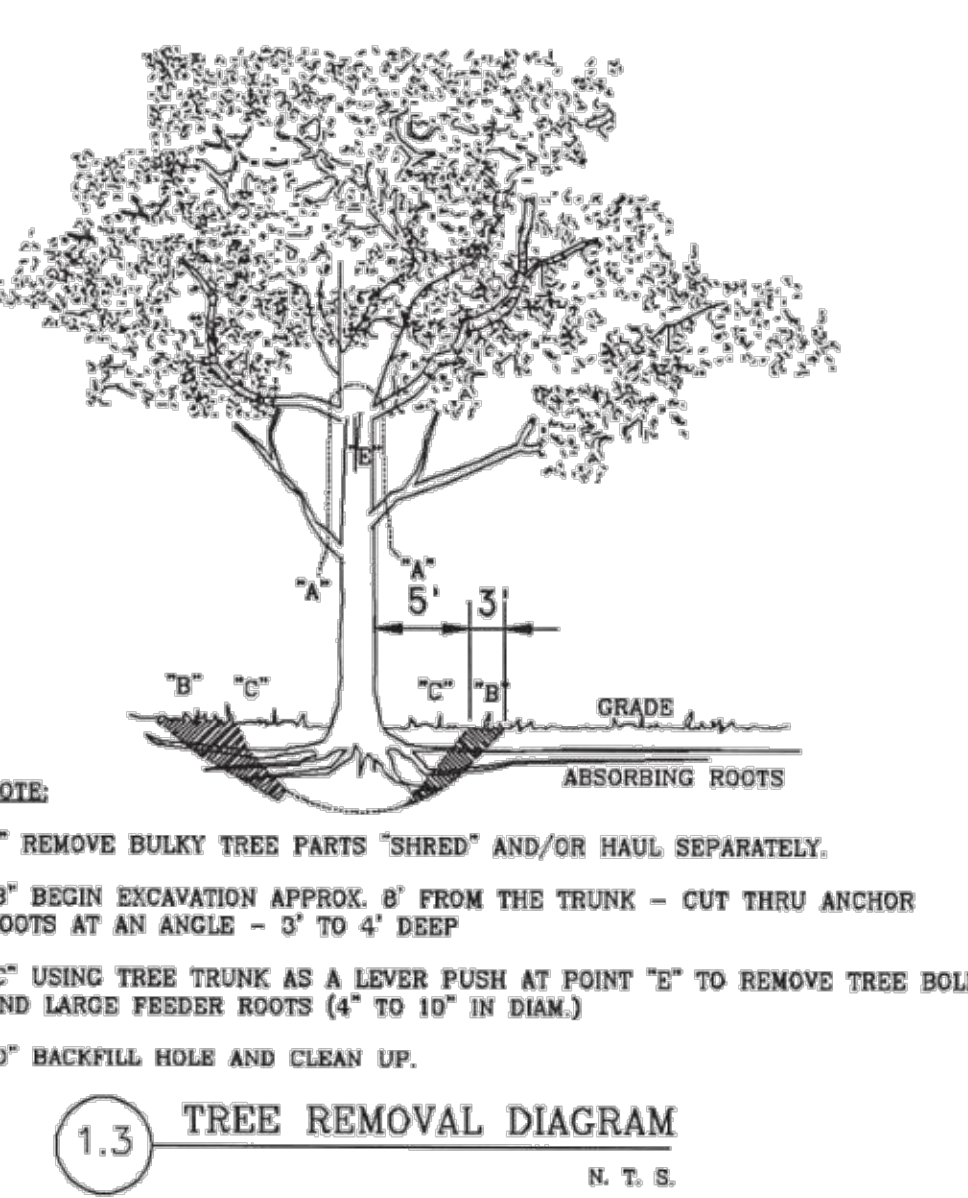
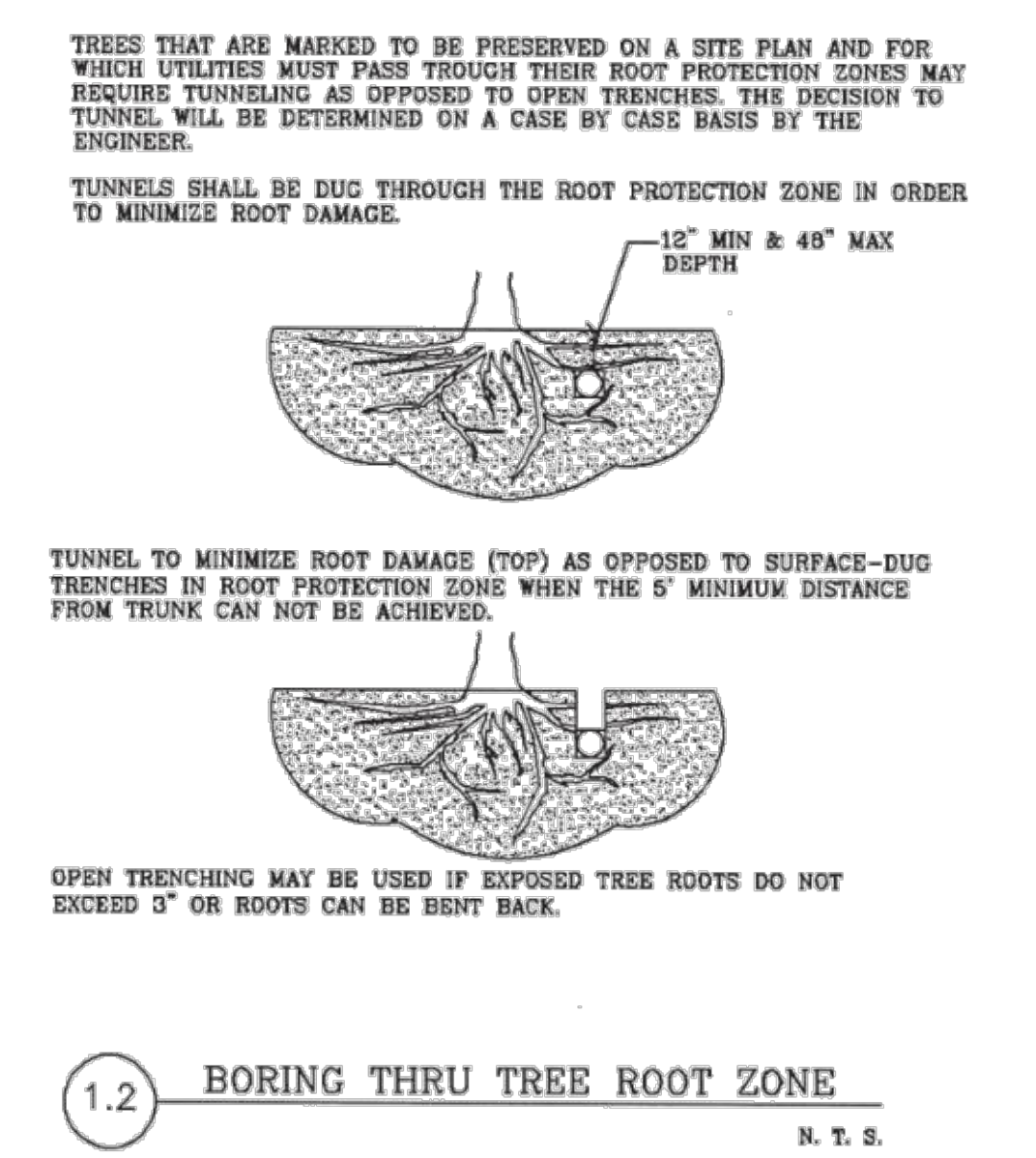
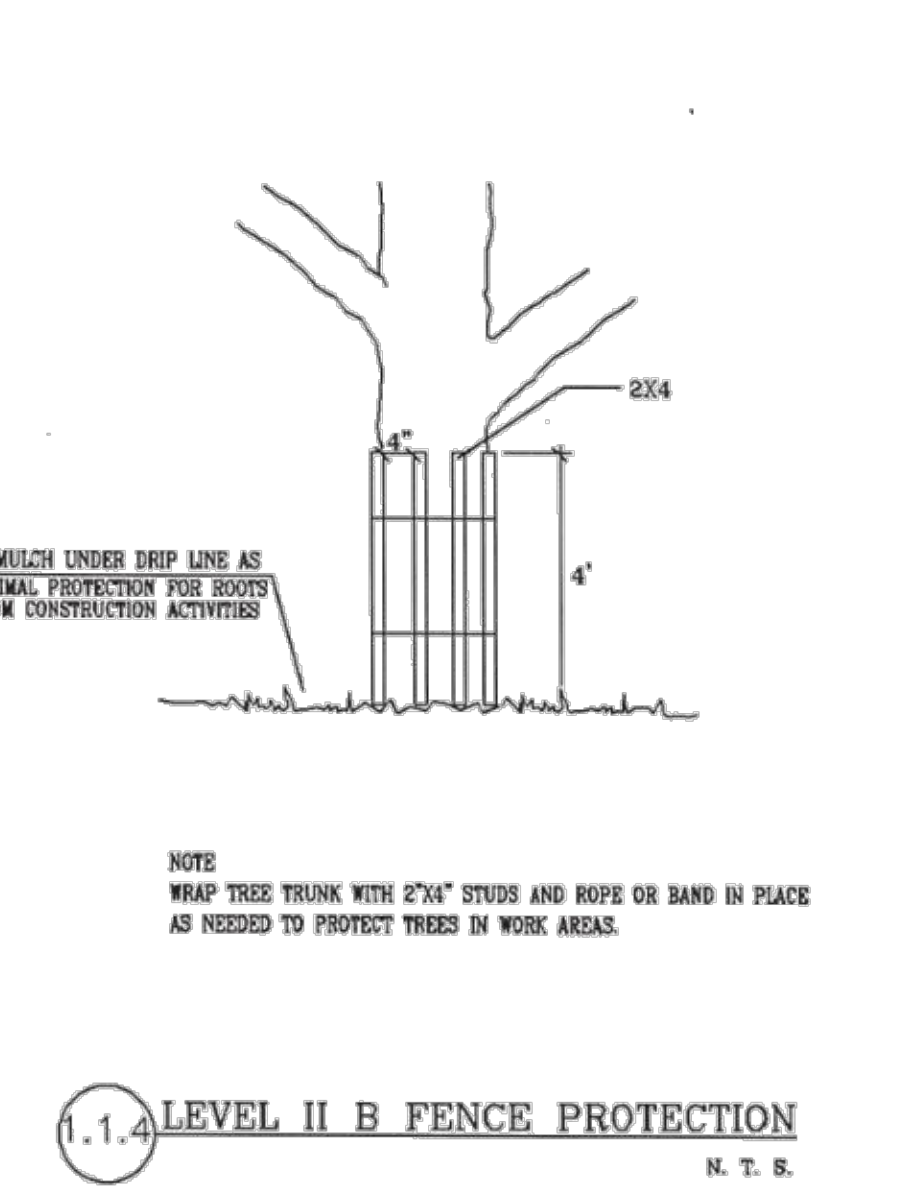
PLAT NO. 21-1800142 DATE: MAY 2021 DRAWN: CHECKED: TE SHEET NUMBER:



ISSUE DATE  
 REVISIONS



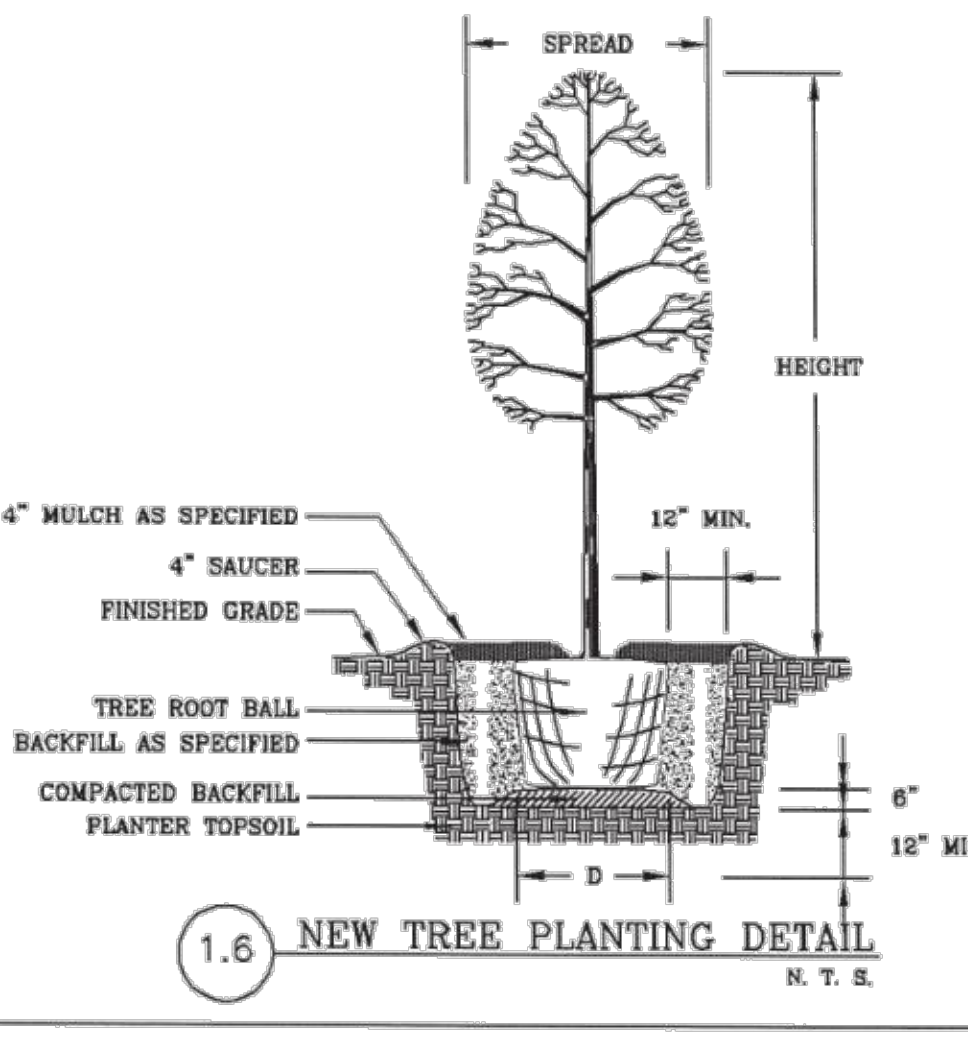
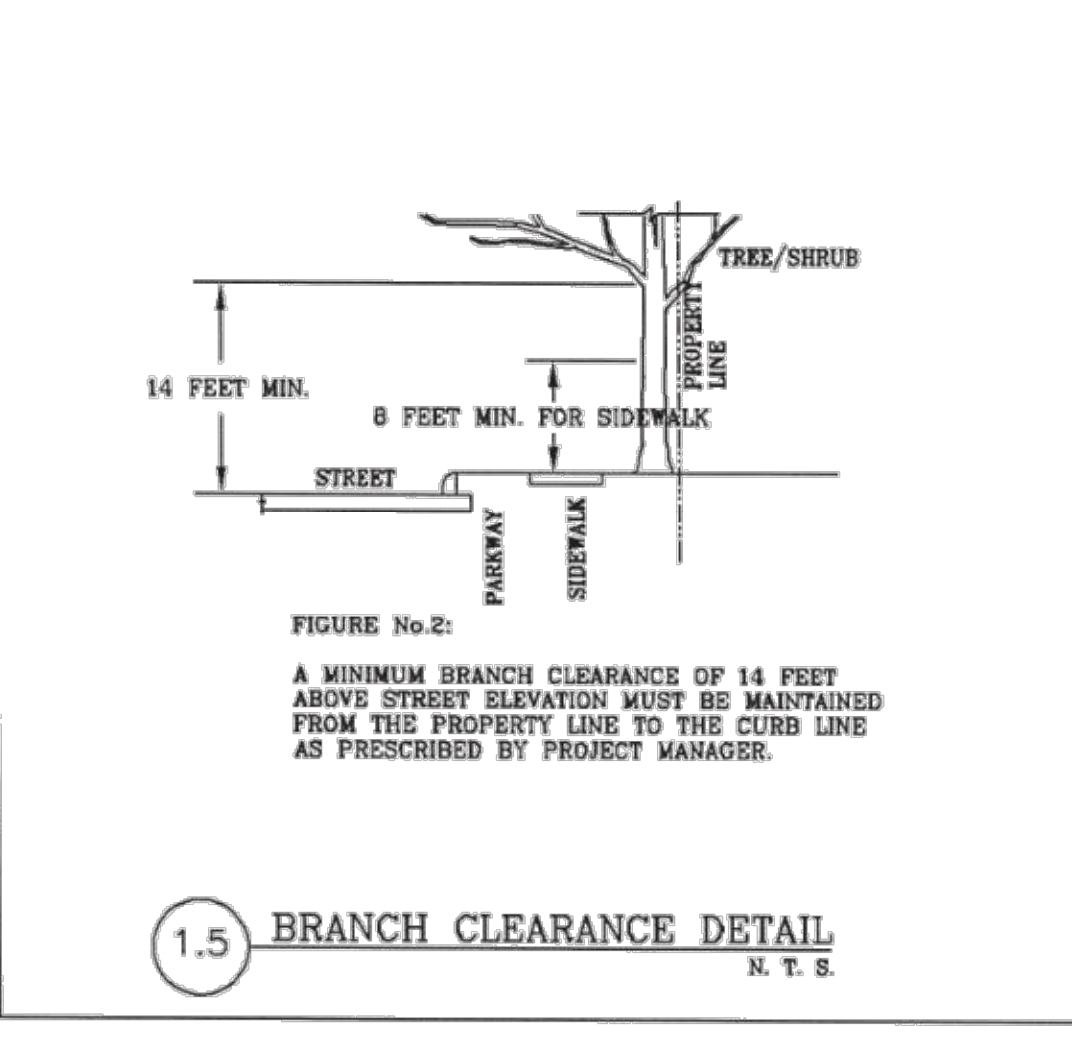
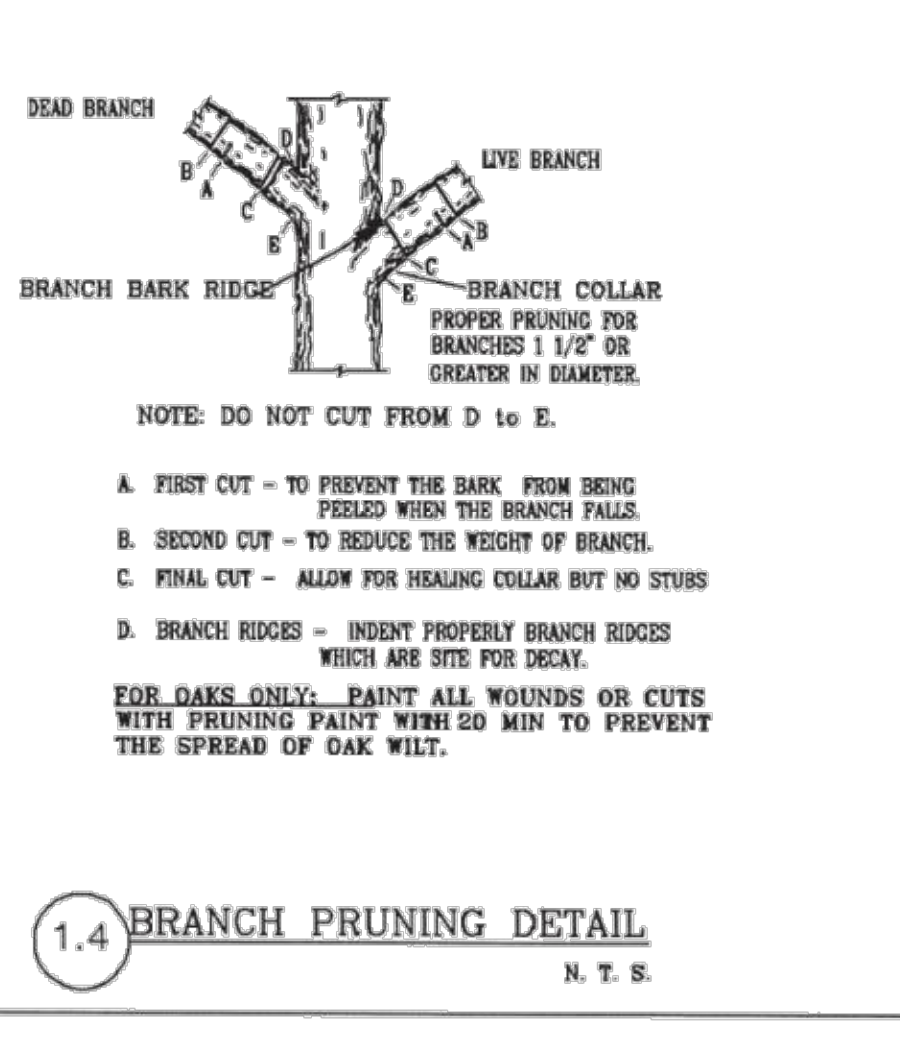
- GENERAL NOTES**
- ALL THE TREES WITH A DIAMETER GREATER THAN 3 INCHES AFFECTED BY CONSTRUCTION SHALL HAVE THE LIMBS AND ROOTS TRIMMED AND PRUNED ACCORDING TO ITEM NO. 802. TREE PRUNING, SOIL AMENDING AND FERTILIZATION, UNLESS SPECIFIED TREES SHALL RECEIVE LEVEL 2 PROTECTION AS PER ITEM NO. 802. TREES TO RECEIVE LEVEL 1 PROTECTION AS PER ITEM NO. 802 ARE SHOWN ON TREE PROTECTION TABLE ON THIS SHEET.
  - ALL TREES SHALL REMAIN UNLESS NOTED ON THE PLANS.
  - NO SITE PREPARATION WORK SHALL BEGIN IN AREAS WHERE TREE PRESERVATION AND TREATMENT MEASURES HAVE NOT BEEN COMPLETED AND APPROVED.
  - TREE PROTECTION FENCING SHALL BE REQUIRED. TREE PROTECTION FENCING SHALL BE INSTALLED, MAINTAINED AND REPAIRED BY THE CONTRACTOR DURING SITE CONSTRUCTION.
  - THE CONTRACTOR SHALL AVOID CUTTING ROOTS LARGER THAN THREE INCHES IN DIAMETER WHEN EXCAVATING NEAR EXISTING TREES. EXCAVATION IN THE VICINITY OF TREES SHALL PROCEED WITH CAUTION. THE CONTRACTOR SHALL CONTACT THE CITY INSPECTOR.
  - THE ROOT PROTECTION ZONE IS THAT AREA SURROUNDING A TREE, AS MEASURED BY A RADIUS FROM THE TREE TRUNK, IN WHICH NO EQUIPMENT, VEHICLES OR MATERIALS MAY OPERATE OR BE STORED. THE REQUIRED RADIUS LENGTH IS 1 FOOT PER DIAMETER INCH OF THE TREE. FOR EXAMPLE, A 10-INCH DIAMETER TREE WOULD HAVE A 5-FOOT RADIUS ROOT PROTECTION ZONE AROUND THE TREE. ROOTS OR BRANCHES THAT ARE IN CONFLICT WITH THE CONSTRUCTION SHALL BE CUT CLEANLY ACCORDING TO PROPER PRUNING METHODS. LIVE OAK WOUNDS SHALL BE PAINTED OVER, WITHIN 20 MINUTES TO PREVENT OAK WILT.
  - ACCESS TO FENCED AREAS WILL BE PERMITTED ONLY WITH THE APPROVAL OF THE ENGINEER OR CITY INSPECTOR.
  - GRADING, IF REQUIRED, SHALL BE LIMITED TO A 3 INCH CUT OR FILL WITHIN THE FENCED ROOT ZONE AREAS.
  - TREES, SHRUBS OR BUSHES TO BE CLEARED FROM PROTECTED ROOT ZONE AREAS SHALL BE REMOVED BY HAND AS DIRECTED BY THE PROJECT MANAGER OR CITY INSPECTOR.
  - TREES DAMAGED OR LOST DUE TO CONTRACTOR'S NEGLIGENCE DURING CONSTRUCTION SHALL BE MITIGATED TO THE ENGINEER'S SATISFACTION.
  - EXPOSED ROOTS SHALL BE COVERED AT THE END OF EACH DAY USING TECHNIQUES SUCH AS COVERING WITH SOIL, MULCH OR WET BURLAP.
  - ANY TREE REMOVAL SHALL BE APPROVED BY THE CITY ARBORIST PRIOR TO ITS REMOVAL.



**1.3 GENERAL NOTES**

**TREE PROTECTION TABLE**

TREE SHEET #	TREE/CALIPER SHEET #	STATION OR NUMBER	LOCATION	PROTECTION MEASURE		REMOVAL
				ITEM 802	MAINTENANCE/TREATMENTS/PROTECTION	
SEE TREE PRESERVATION PLAN SHEETS						



**1.3 TREE PROTECTION TABLE**

**TREE INVENTORY SUMMARY**  
 (6" DIAMETER AND LARGER)

TOTAL DIAMETER INCHES, R.O.W.	397
TOTAL DIAMETER INCHES REMOVED	152
TOTAL DIAMETER INCHES PRESERVED	155
TOTAL PERCENTAGE INCHES PRESERVED	50
TOTAL INCHES TO BE MITIGATED	18.5

**1.3 TREE INVENTORY SUMMARY**

SHEET 23 OF 26  
 PREPARED BY: FERNANDEZ FRAZER WHITE & ASSOC. INC.  
 & C. F. ZAVALA GROUP  
**CITY OF SAN ANTONIO**  
  
**DEPARTMENT OF PUBLIC WORKS**  
**CITY OF SAN ANTONIO**  
**TREE PROTECTION DETAILS**  
**TREE PRESERVATION**

DESIGNED:	ITD. NO. DATE	STATE	SHE. NO.
CHECKED:	TEXAS		1 OF 4
DRAWN:	STATE DIST. NO.	COUNTY CONTROL NO.	SECT. NO. JOB NO. HIGHWAY NO.
CHECKED:	BEAR		